



**Flourish**  
at Newcastle Hospitals



The Newcastle upon Tyne Hospitals  
NHS Foundation Trust

# Our Climate Emergency Journey

James Dixon MSc, FIEMA, CEnv  
Head of Sustainability  
Newcastle Hospitals

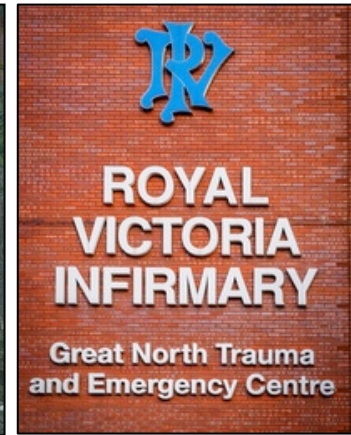
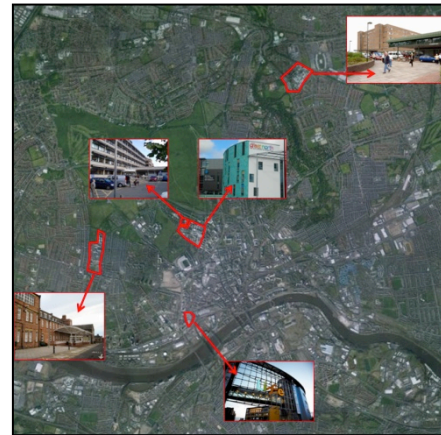
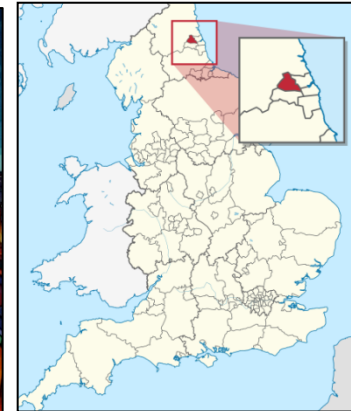
11<sup>th</sup> September 2019  
European Healthcare Climate Summit



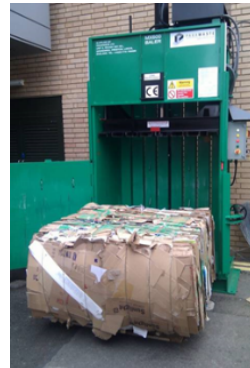
# Newcastle Hospitals

*“...Providing patient-centred healthcare to communities in the North East of England and beyond for over 250 years. We’re one of the largest NHS trusts in the UK, offering a wider range of specialist services than any other.”*

- **2 million patient contacts** a year
- Serve a **population of over 3 million**
- **15,000 staff** and **1,800 beds**
- **£1 billion** turnover
- **Five** main sites, plus many community sites
- **L1 Major Trauma Centre** with helipad at RVI
- Long history of **clinical excellence**:
  - *1<sup>st</sup> child heart transplant in Europe ('87)*
  - *1<sup>st</sup> single ('87) & double lung ('91) transplant in Europe*
- **CQC “Outstanding” 2016 & 2019** (only Shelford Trust)



# History of Sustainable Healthcare Leadership



# Sustainable Healthcare in Newcastle (Shine)



## Energy

Using energy more efficiently and transitioning to lower carbon energy sources



## Waste

Moving up the waste hierarchy: dispose of less, reuse and recycle more



## Water

Eliminating wasteful use of this precious resource



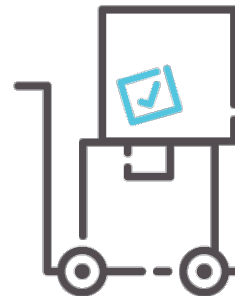
## Buildings & Land

Providing healthy and biodiverse spaces for patient and staff wellbeing



## Journeys

Encouraging active and sustainable travel for all



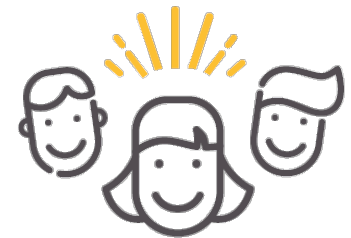
## Purchasing

Working with our supply chain to deliver ethical and sustainable procurement



## Care

Developing low carbon care pathways and adapting our services with climate change in mind



## People

Inspiring, empowering and motivating our people to embrace sustainable healthcare

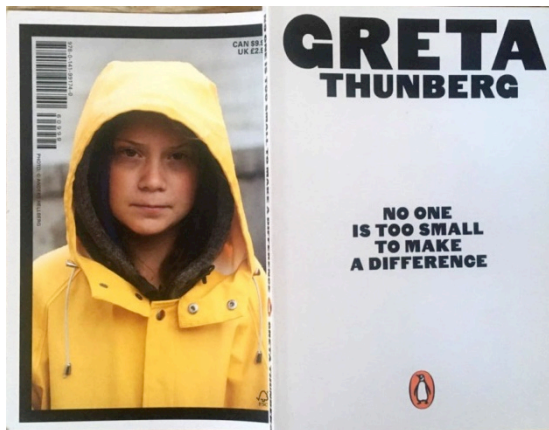


# What is a Climate Emergency Declaration?

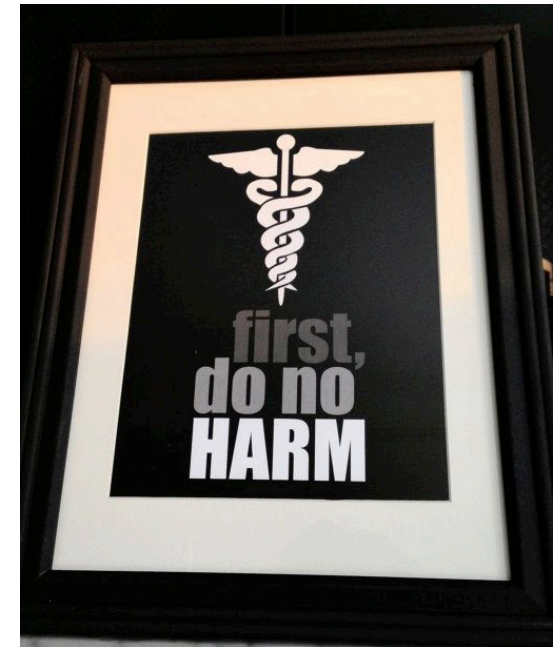
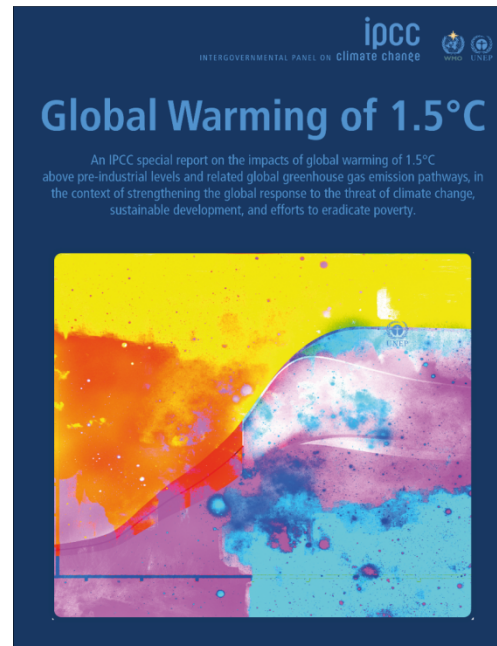
1. A public acknowledgement of the **climate crisis which threatens population health**
2. A commitment to **fast-tracking the reduction of our carbon emissions**
3. Collaborative action with our civic partners to **deliver a zero carbon Newcastle**



# Our Climate Emergency Journey



# The reasons we declared...



ChronicleLive NEWS • IN YOUR AREA WHAT'S ON • BUSINESS • NEWCASTLE UNITED MORE •

News • North East News • Newcastle City Council

## Newcastle declares 'climate emergency' amid protests against council's 'perverse' decisions

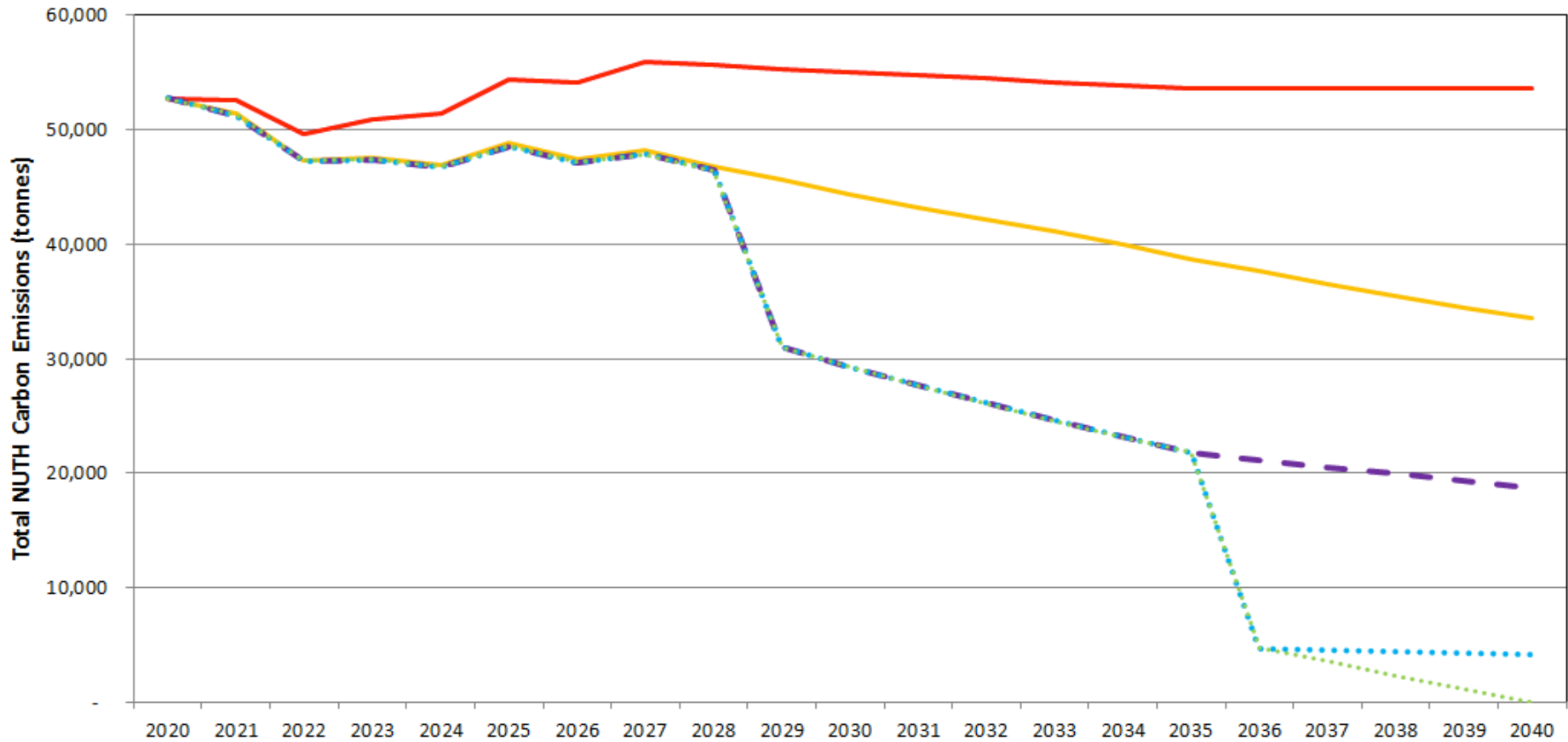
Dozens of campaigners from Save Newcastle Wildlife, the Green Party, Defend Dewley Hill and Extinction Rebellion gathered outside Newcastle City Centre on Wednesday evening.

### Newcastle University declares a climate emergency

Published on: 18 April 2019

Newcastle University has signalled its commitment to climate change action by joining a number of organisations in the UK and all over the world to declare a climate emergency.

# How NUTH *might* achieve Carbon Neutrality?



- Business-as-usual (BAU) includes Estates Strategy (CAV sale and RVI new builds)
- Scenario 1 (BAU with 3% annual demand efficiency improvements and on-site renewables)
- - Scenario 2 (Scenario 1 with switch from CHP elec generation to grid in 2028)
- ..... Scenario 3 (Scenario 2 with switch from natural gas to zero carbon hydrogen in 2035)
- ..... Scenario 4 (Scenario 3 with innovation and systemic decarbonisation by government)



# Collaborate to achieve



**LOCAL ACTION**



**NATIONAL ACTION**



**INTERNATIONAL ACTION**



# Cathedral Thinking

*“...it is still not too late to act. It will take a far-reaching vision. It will take courage. **It will take fierce determination to act now, to lay foundations when we may not know all the details about how to shape the ceiling.** In other words, it will take cathedral thinking.”*

Greta Thunberg, Age 16  
European Parliament, April 2019





James Dixon

0191 2821503

[james.dixon@nuth.nhs.uk](mailto:james.dixon@nuth.nhs.uk)

*@ecoboyatheart*