

Sustainability in quality improvement: harnessing clinical innovation

Dr. Frances Mortimer
Medical Director, Centre for Sustainable Healthcare

European Healthcare Climate Summit
London, 11 September 2019





2008

The environment is really important – but I'm not sure what I can do about it

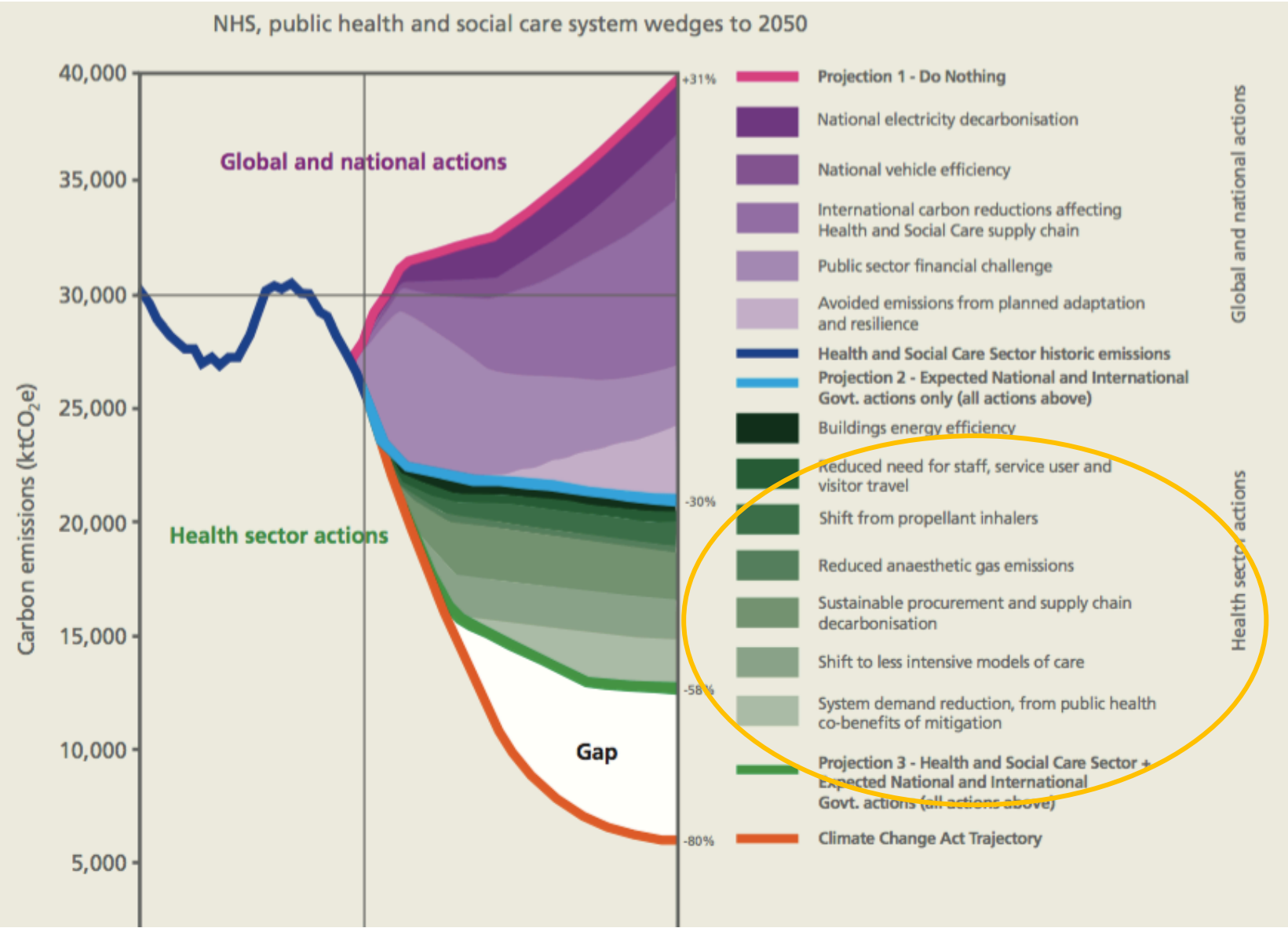
Maybe there are some changes we could make at work – but I don't feel able to talk about it there

Perhaps I should re-train in sustainable building design???



CENTRE for
SUSTAINABLE
HEALTHCARE
inspire • empower • transform

How will 80% carbon reduction be achieved?



Require clinical leadership

Clinical innovation

Senior leadership

Patient outcomes

Patient experience

Core mission

Sustainability

Estates and facilities

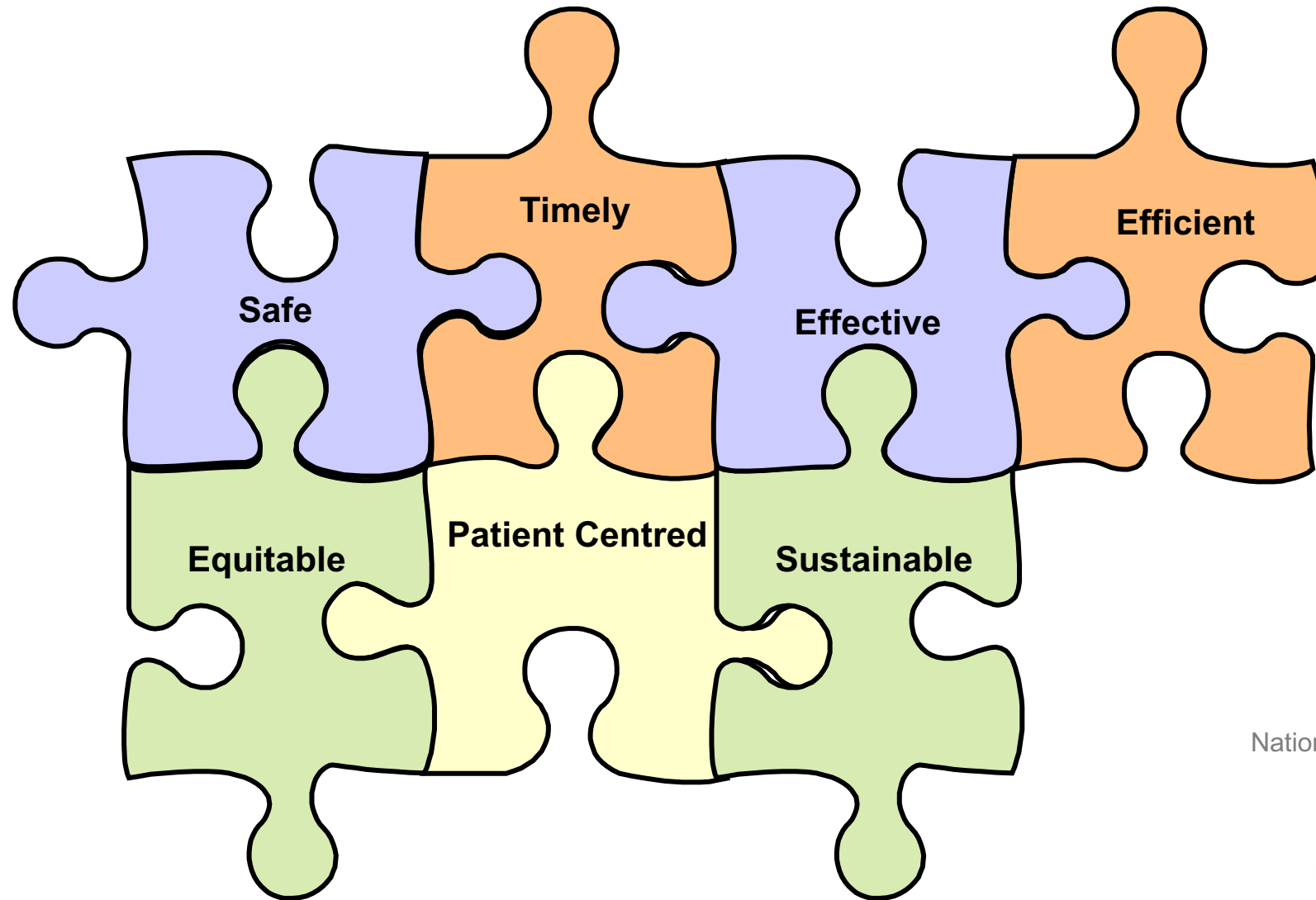
Energy / carbon / cost
waste, travel

Secondary



What if... sustainability became a mainstream part of quality improvement?

Sustainability as a domain of quality



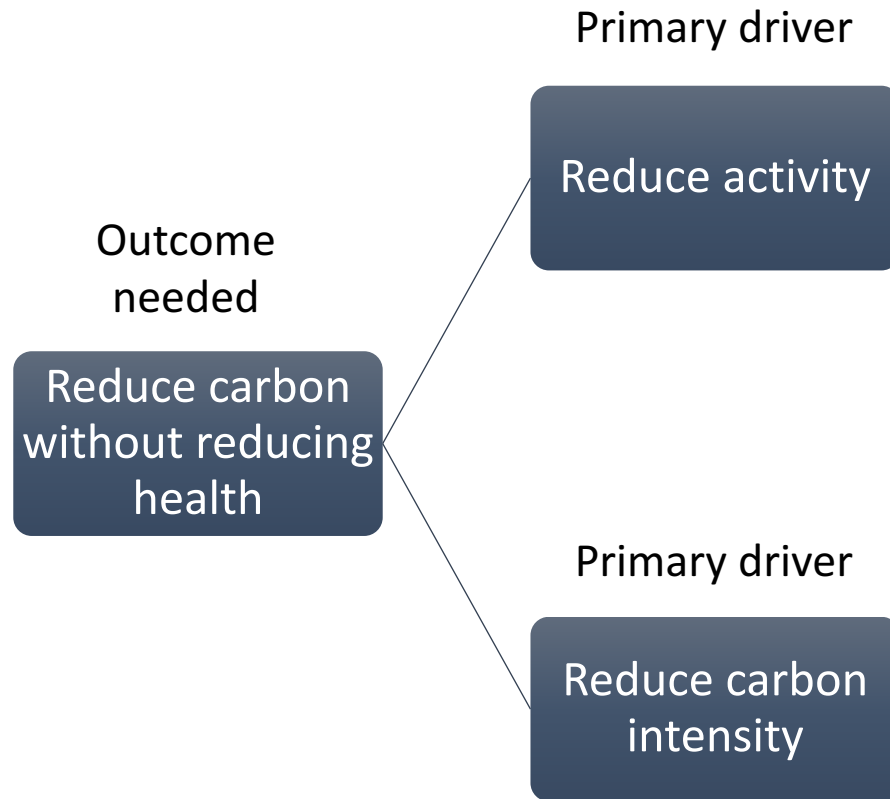
Dr Donal O'Donoghue
National Clinical Director for
Kidney Care 2007-13



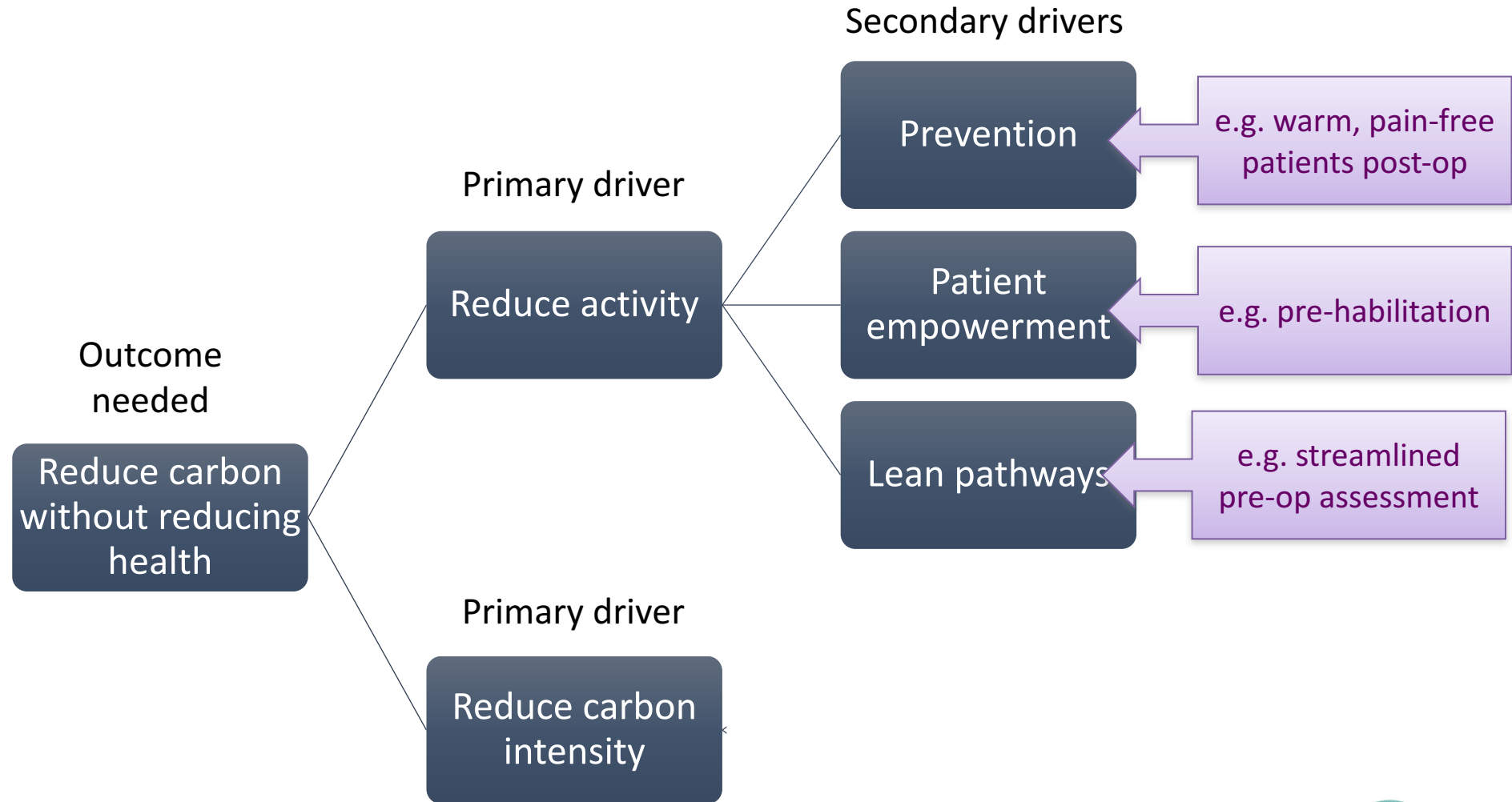
See also: Atkinson, S. et al. Defining Quality and Quality Improvement. Clin Med vol. 10, no. 6 537-539 (2010)

Sustainable clinical practice: principles

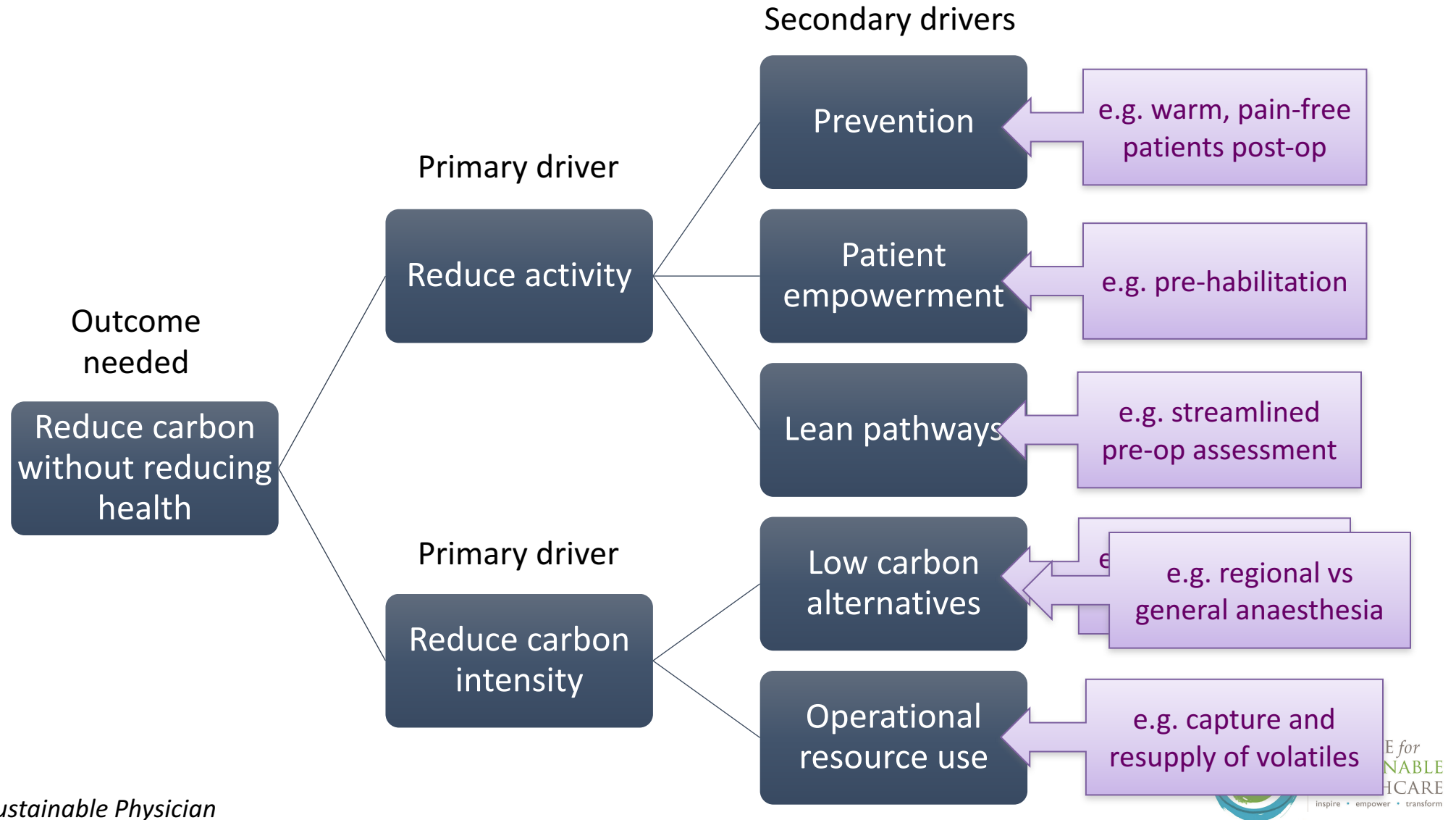
Secondary drivers



Sustainable clinical practice: principles



Sustainable clinical practice: principles



What if... sustainability became a mainstream part of quality improvement?

How would it work?

QUALITY IMPROVEMENT Sustainability in quality improvement: redefining value

Authors: Frances Mortimer,^A Jennifer Isherwood,^B Alexander Wilkinson^C and Emma Vaux^{D,E}

$$\text{Value} = \frac{\text{Outcomes for patients and populations}}{\text{Environmental + social + financial impacts (the 'triple bottom line')}}$$

Mortimer F, Isherwood J, Wilkinson A, Vaux E. Sustainability in quality improvement: redefining value. *Future Healthcare Journal*, 2018 Vol.5(2):88-93

QUALITY IMPROVEMENT Sustainability in quality improvement: redefining value

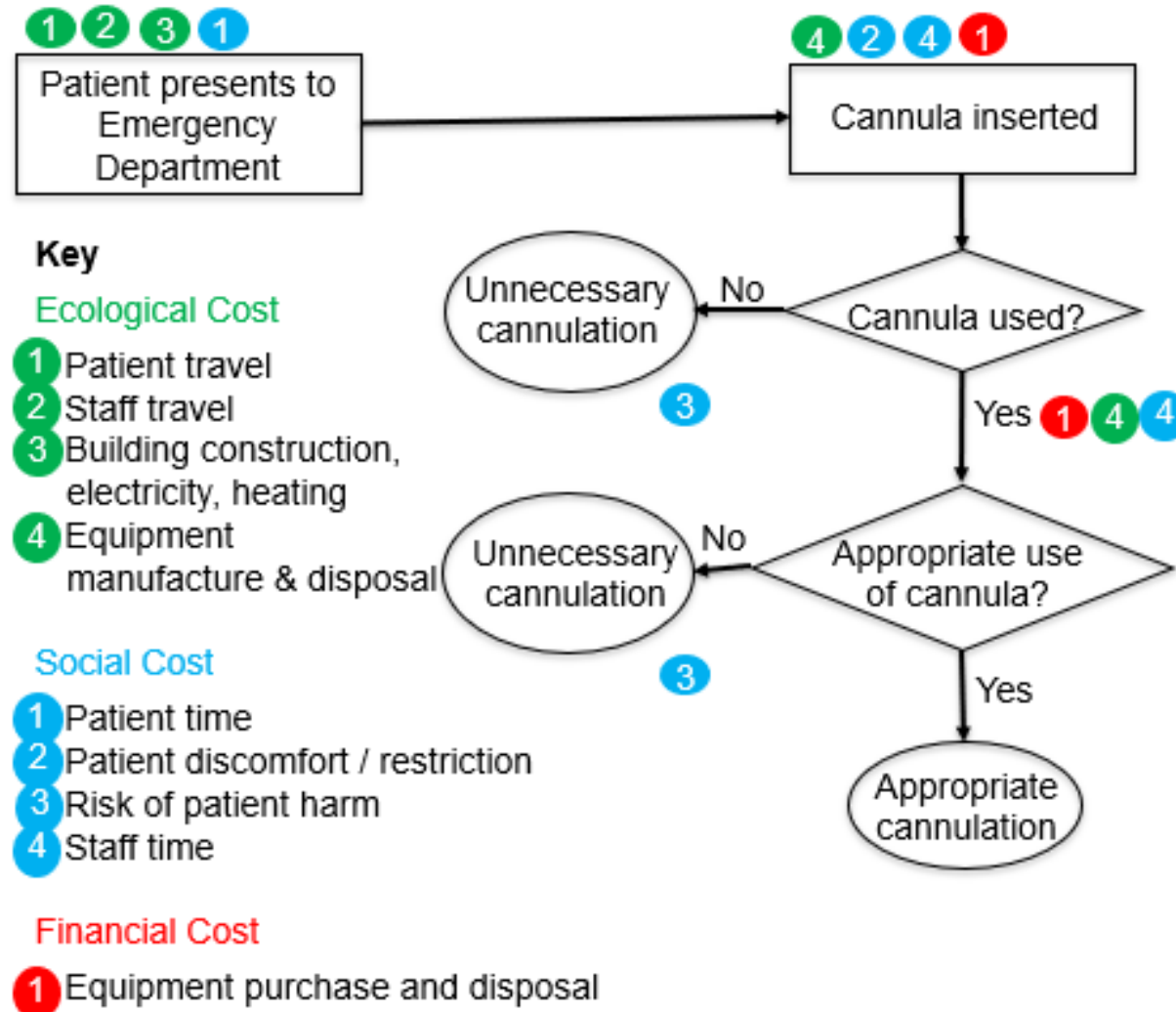
Authors: Frances Mortimer,^A Jennifer Isherwood,^B Alexander Wilkinson^C and Emma Vaux^{D,E}

Table 2. Building sustainability into quality improvement ('SusQI'): intended benefits

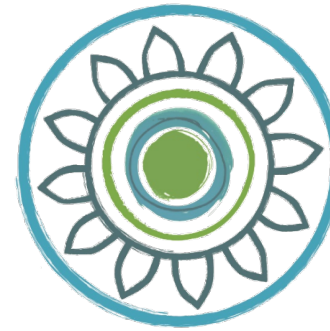
QI element	Sustainability content	Intended benefits
1 Setting goals	Sustainability as a domain of quality; relationship to other domains	New motivation to contribute to QI, energy for change
2 Studying the system	Understanding environmental and social resource use / impacts; carbon hotspots in the NHS; 'seven capitals' matrix	Highlights wastes and opportunities which are often overlooked; stimulates radical thinking
3 Designing the improvement effort	The Centre for Sustainable Healthcare principles of sustainable clinical practice (prevention, patient empowerment and self-care, lean systems, low carbon alternatives) ^a – drivers and process changes	Directs towards highest value improvements, future proofing
4 Measuring impact / return on investment	Triple bottom line / sustainable value equation; measuring carbon	Drives sustainable change; allows benefits to be communicated to broader audience, not exclusively regarding financial cost-benefit

^aFrom Mortimer *et al*, 2010.¹² QI = quality improvement

Understanding env/soc/£ impacts: process map




In practice...



GREEN WARD COMPETITION

CENTRE FOR SUSTAINABLE HEALTHCARE



Royal Cornwall Hospitals 
NHS Trust

Dartford and Gravesham 
NHS Trust

Ashford and St. Peter's Hospitals 
NHS Foundation Trust

University Hospital Southampton 
NHS Foundation Trust


Whittington Health
NHS Trust

University College 
London Hospitals
NHS Foundation Trust



In practice...

“The project has brought about real cultural and behavioural changes in the department. Now that we have participated ... many clinicians are approaching me with ideas for other sustainability projects. We have a long list!”

Dr Cassie Worth, Emergency Medicine Consultant, Royal Devon & Exeter hospital

In education...

“my students (working nurses) on the ICU nursing course are using the SusQI framework for their quality improvement project assignment. I’m marking essays now and adding in sustainability as a component of quality has enhanced the academic writing this year – it has also prompted the students to develop more interesting projects”

Dr Heather Baid, University of Brighton

Thank you!

<http://sustainablehealthcare.org.uk/susqi>

frances.mortimer@sustainablehealthcare.org.uk

[@FrancesMortimer](#) [#SusQI](#)

