

# European Healthcare Climate Summit

September 2019

Sonia Roschnik

NHS England and NHS Improvement



# SDU

- Funded by and accountable to NHS England and Public Health England
- Hosted within Strategy Group, NHS England
- Set up in 2008 as the Climate Change Act came into force (26/11/2008)
- To support the NHS to fulfil its potential as a leading sustainable and low carbon organisation



# Advocacy to Delivery

- The power of data
- The power of people
- The power of systems
- Rolling our sleeves up
  
- Next phase?

NHS England and NHS Improvement

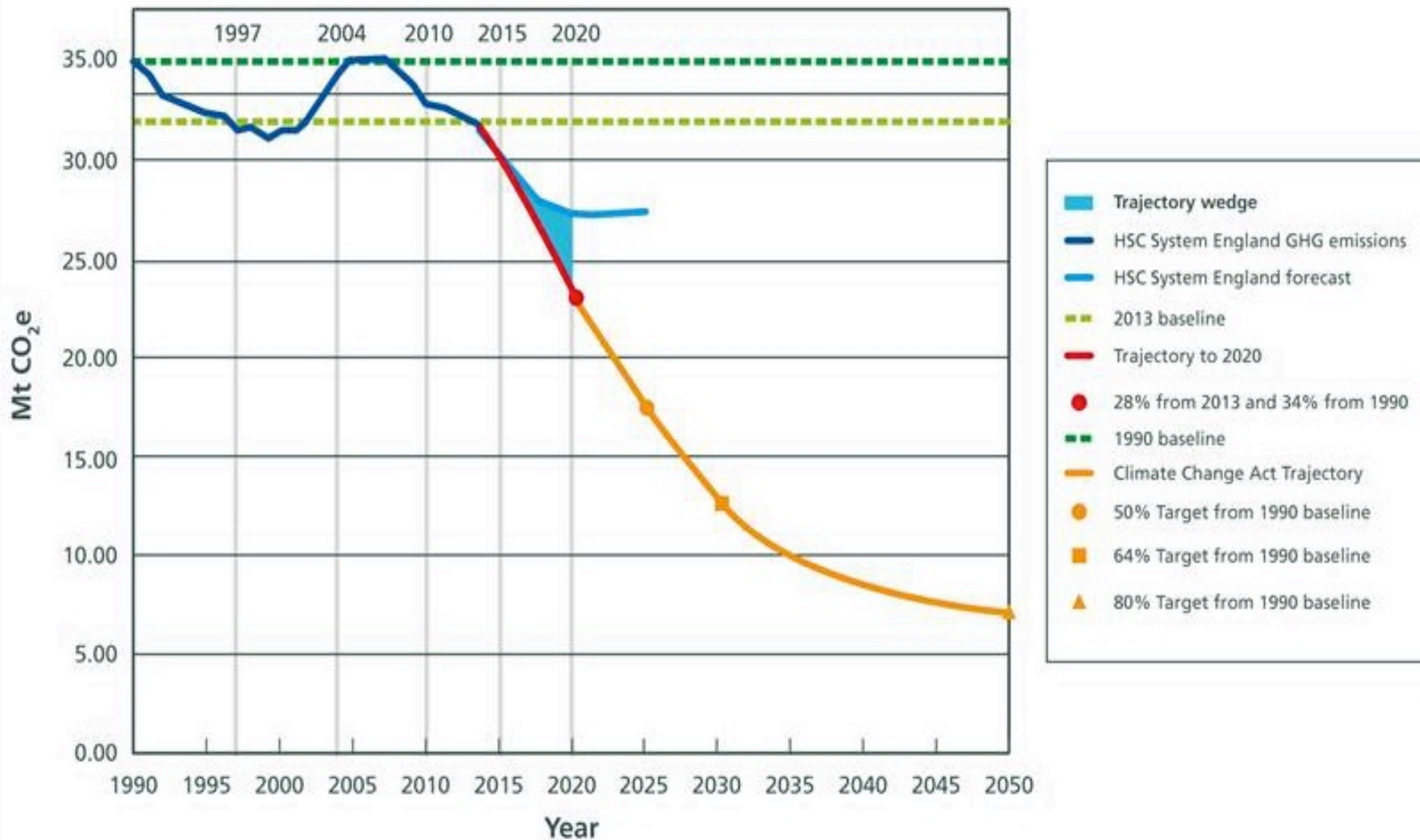


# The Power of Data

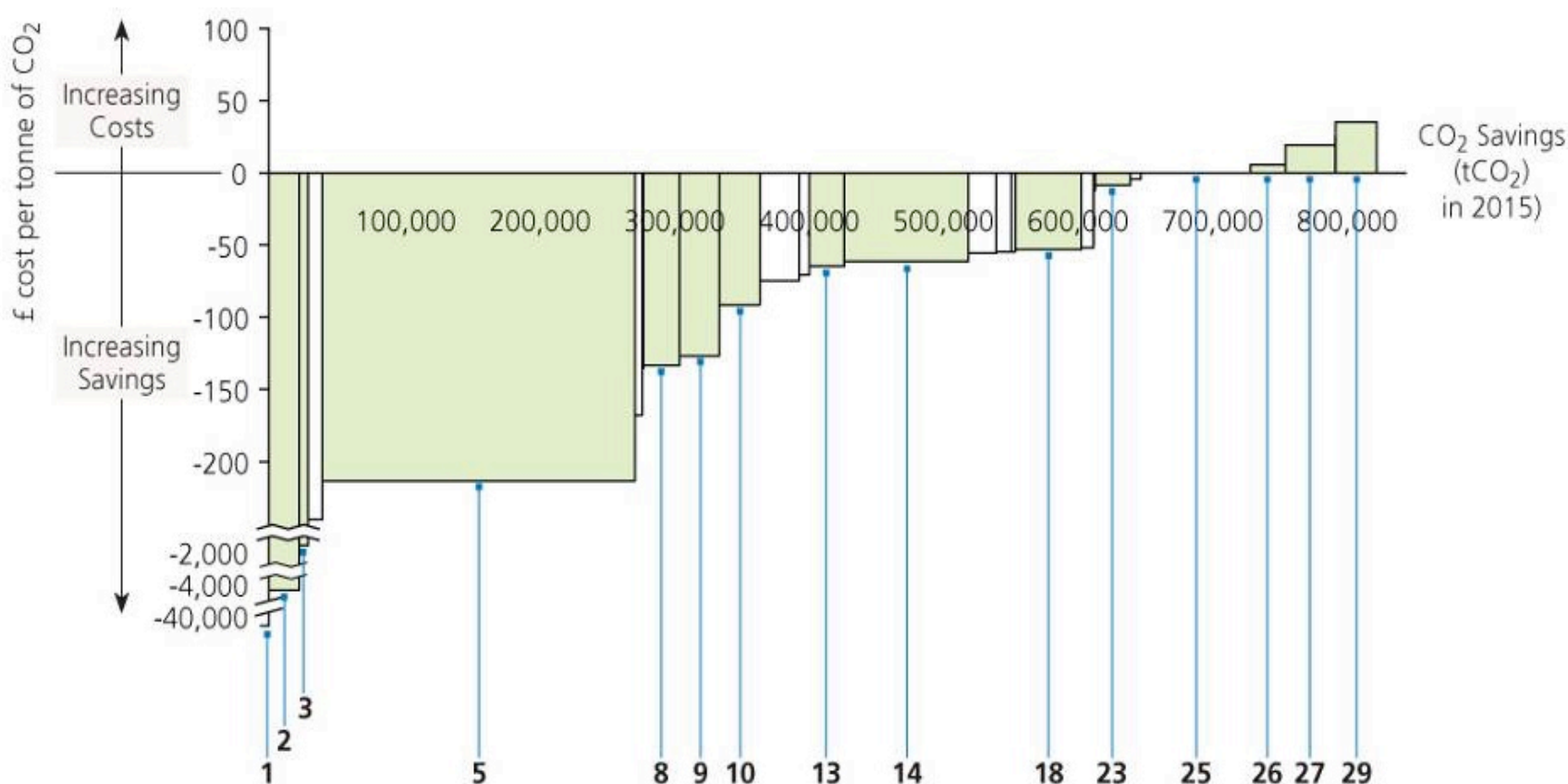
- Carbon footprint graphs 2009-2018
- Drilling down into the data - Procurement
- Links to Finance - MAC curve
- Monitoring Progress
- Modelling for action



Health and Social Care England Carbon Footprint  
CO<sub>2</sub>e baseline from 1990 to 2025 with Climate Change targets



# Marginal Abatement Cost (MAC) curve



NHS England and NHS Improvement



# NHS impacts

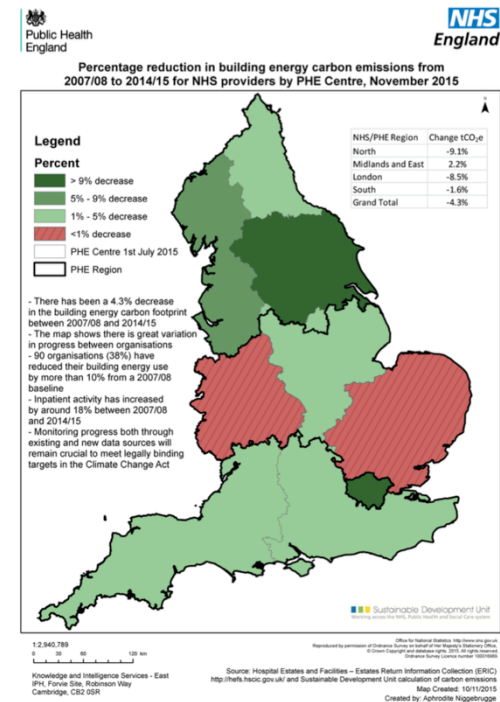
- 21.4 Mt of CO<sub>2</sub> emissions cost society up to £2bnpa in climate change damage
- Each year health related air pollution cost society £345m and 6,440 QALYs
- 590kt Waste, 15% to landfill and 22.7% plastic

Our impacts are often concentrated closest to the most vulnerable, potentially contributing to health inequalities.



# Power of People

- Staff power
- Public power
- Regions
- Networks



NHS England and NHS Improvement





# The Power of Systems

- Route Map
- Transformation



**GETTING THERE?**  
SUSTAINABILITY IS ROUTINE,  
CULTURALLY EMBEDDED AND  
SELF REGULATING.

**TRANSFORMATION**

**ON THE WAY**  
EXPECTATION THAT SUSTAINABILITY  
IS BECOMING THE NORM.

**TRANSITION**

**UNDERSTANDING  
SUSTAINABILITY**  
TAKING OWNERSHIP. TAKING ACTION.

**GETTING STARTED**



- 2050
- 2049
- 2048
- 2047
- 2046
- 2045
- 2044
- 2043
- 2042
- 2041
- 2040
- 2039
- 2038
- 2037
- 2036
- 2035
- 2034
- 2033
- 2032
- 2031
- 2030
- 2029
- 2028
- 2027
- 2026
- 2025
- 2024
- 2023
- 2022
- 2021
- 2020
- 2019
- 2018
- 2017
- 2016
- 2015
- 2014
- 2013
- 2012
- 2011

<b>From</b>	health care as an institution led service	<b>To</b>	health and social care as part of the community
<b>From</b>	curative and fixing medical care	<b>To</b>	early intervention and preventative care
<b>From</b>	sickness	<b>To</b>	health and well-being
<b>From</b>	professional	<b>To</b>	personal
<b>From</b>	isolated and segregated	<b>To</b>	integrated and in partnership
<b>From</b>	buildings	<b>To</b>	healing environments
<b>From</b>	decision making based on today's finances	<b>To</b>	an integrated value of the future which accounts for the impacts on society and nature
<b>From</b>	single indicators and out of date measurements	<b>To</b>	multiple score card information and in real time
<b>From</b>	sustainability as an add on	<b>To</b>	integration in culture, practice and training
<b>From</b>	waste and over use of all resources	<b>To</b>	a balanced use of resources where waste becomes a resource
<b>From</b>	nobody's business	<b>To</b>	everyone's business

# Progress

- 18.5% CO2 since 2007 whilst activity increased
- Water footprint down by 21% since 2010
- 71 % SDMPs in organisations (mostly providers)
- Sustainability assessments, tools and reporting increasing
- Integrated into NHS Contracts, NHS Constitution



# Rolling our sleeves up

- A corporate approach
- A Greener NHS?
- Working with Industry and partners

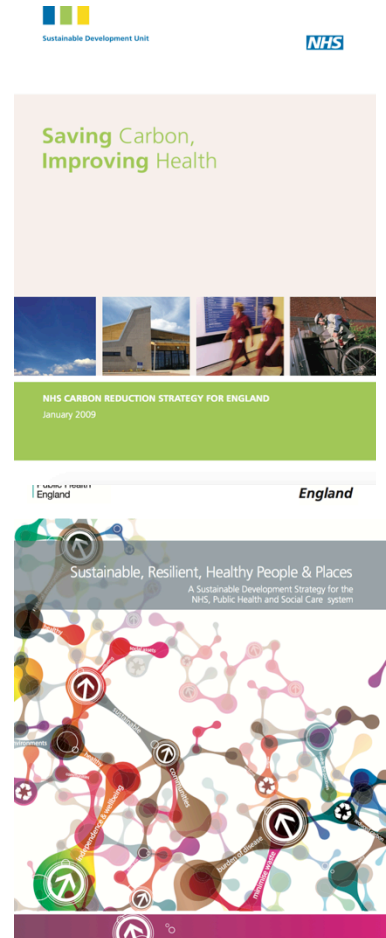
NHS England and NHS Improvement



# A corporate approach

- Develop a Plan approved at Board level (SDMP)
- Evaluate organisations approach and progress
- Measure, monitor and report on carbon as a minimum
- Raise awareness in staff, patients and public

NHS England and NHS Improvement





### Improving Air Quality



### Reducing carbon, waste and water



### Reducing single use plastics

#### Targets

By 2023/24, we will cut business mileages and fleet air pollutant emissions by 20%

By 2025, we will reduce our carbon footprint by 51% against 2007 levels

We will deliver reductions in single use plastics throughout the NHS supply chain

#### Key initiatives

- Reducing NHS **fleet emissions** (including ambulances) and other specialist vehicles
- Reducing **outpatient appointments** by a third
- Working with **local government** to reduce emissions

- Greening our **estates and facilities**, including phasing out coal and oil fuel as primary heating
- Switching to greener **asthma inhalers**
- Reducing the carbon footprint from **anaesthetic gases**

- Reducing single use plastics across **NHS catering** as well as clinical and supply chain domains
- Working to improve the disposal and recycling processes for plastics
- Providing alternative options through **NHS supply chain**

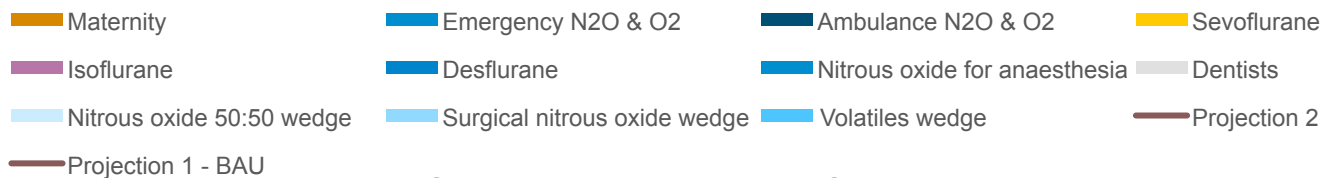
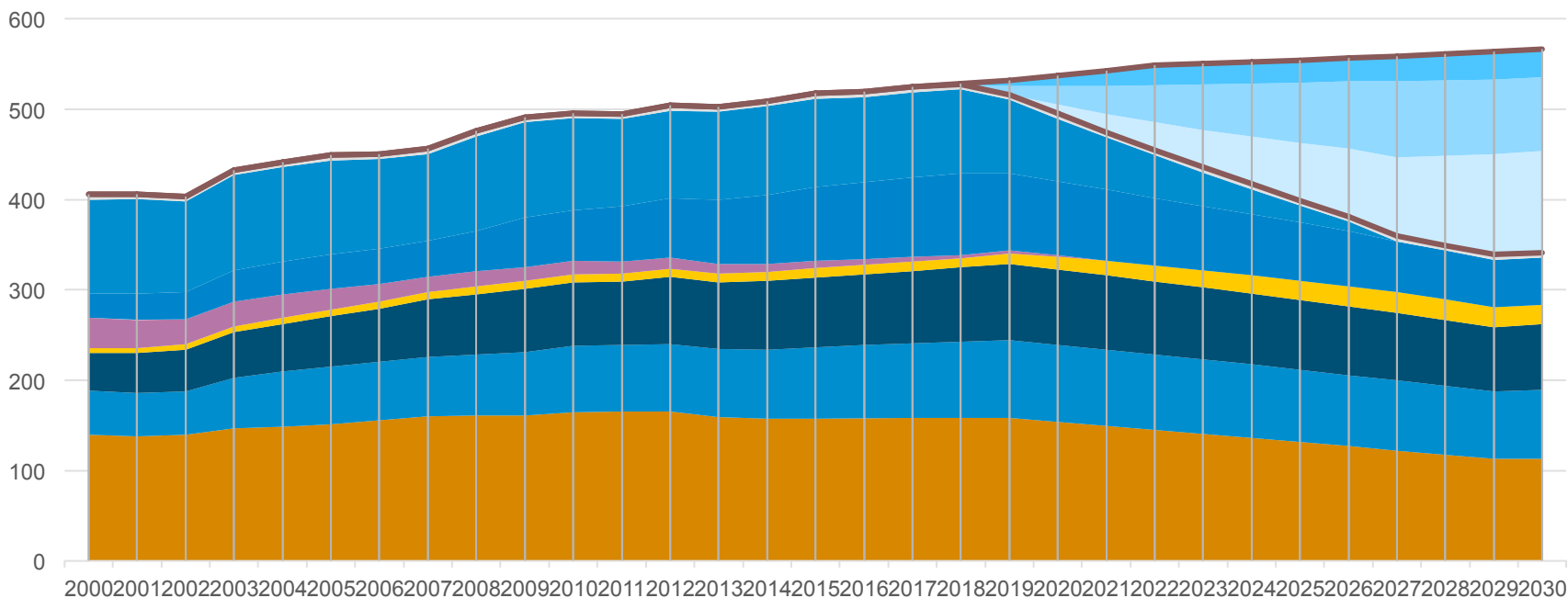
#### Enablers

- Supporting data and analytics
- National procurement and supply chain
- Innovation & Technology
- Communications & Engagement

NHS England and NHS Improvement



# Anaesthetic gases 2000-30



NHS England and NHS Improvement





## A single cataracts operation generates ~2kg of waste (of which 1.3kg is plastic)



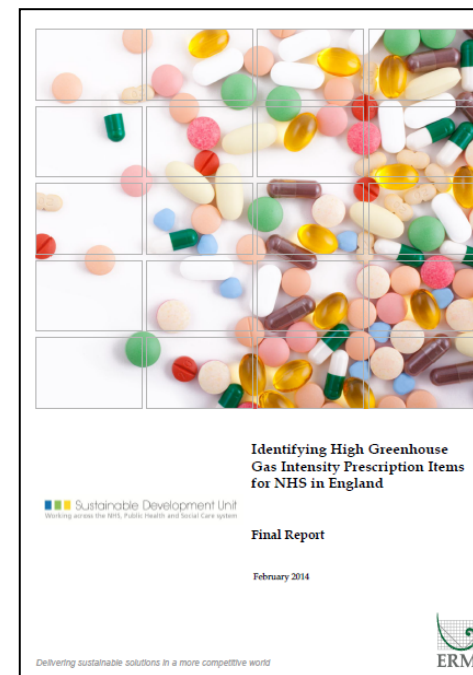
With thanks to Dr Caspar Gibbon & team  
at North Devon Healthcare NHS Trust

NHS England and NHS Improvement



# Working with Industry

BNF CHEMICAL NAME	ASSOCIATED BNF SECTION NAME
Adalimumab	Drugs Used In Rheumatic Diseases & Gout
Amoxicillin	Antibacterial Drugs
Atorvastatin	Lipid-Regulating Drugs
Beclometasone Dipropionate	Corticosteroids (Respiratory)
Budesonide	Corticosteroids (Respiratory)
Co-Codamol (Codeine Phos/Paracetamol)	Analgesics
Co-Dydramol (Dihydrocodeine/Paracet)	Analgesics
Enteral Nutrition	Oral Nutrition
Etanercept	Drugs Used In Rheumatic Diseases & Gout
Fluticasone Propionate (Inh)	Corticosteroids (Respiratory)
Gabapentin	Antiepileptics
Ibuprofen	Soft-Tissue Disorders & Topical Pain Rel
Metformin Hydrochloride	Drugs Used In Diabetes
Naproxen	Drugs Used In Rheumatic Diseases & Gout
Paracetamol	Analgesics
Salbutamol	Bronchodilators
Simvastatin	Lipid-Regulating Drugs
Sodium Valproate	Antiepileptics
Sulfasalazine	Chronic Bowel Disorders
Tiotropium	Bronchodilators



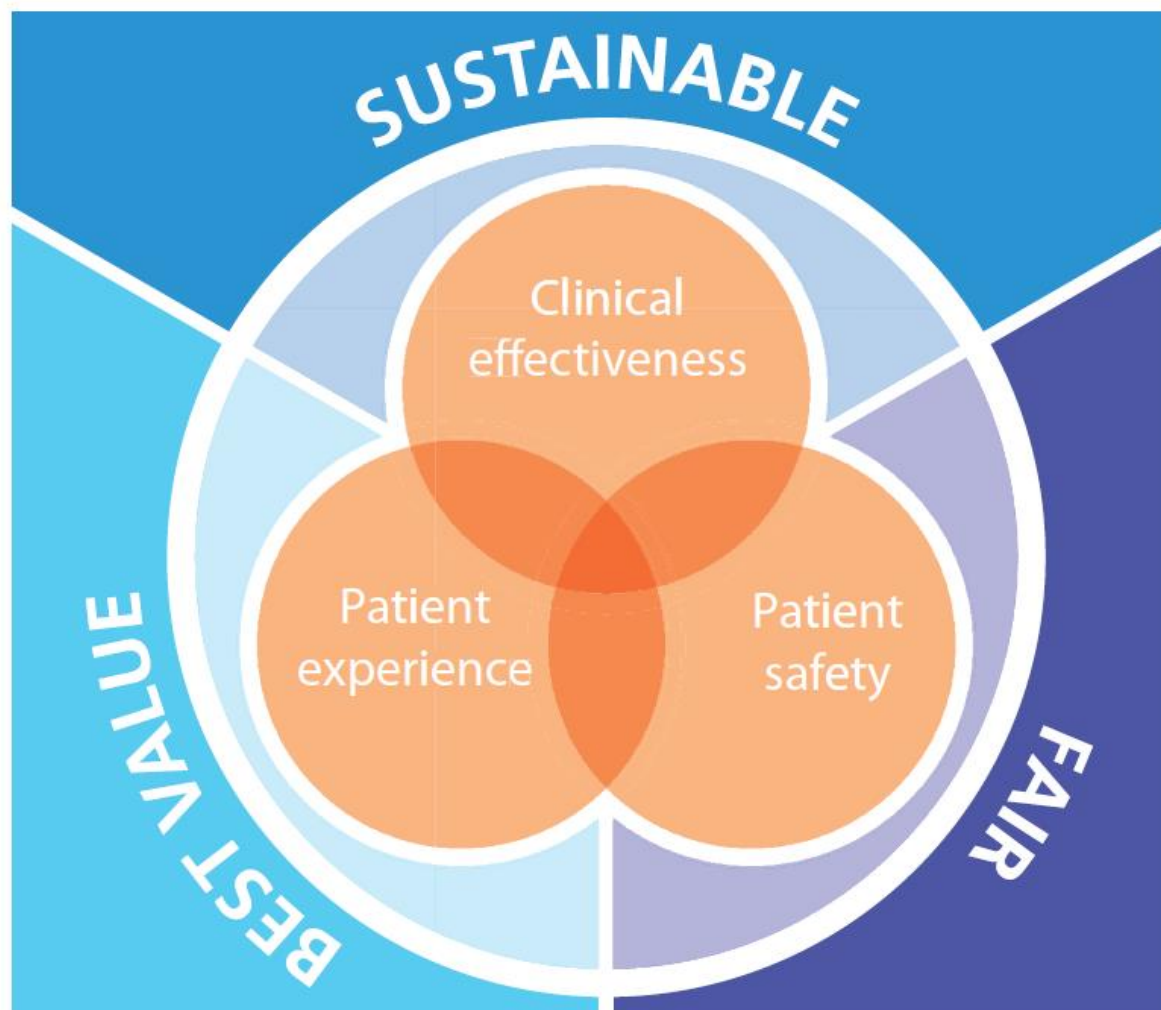
NHS England and NHS Improvement



# Next phase?

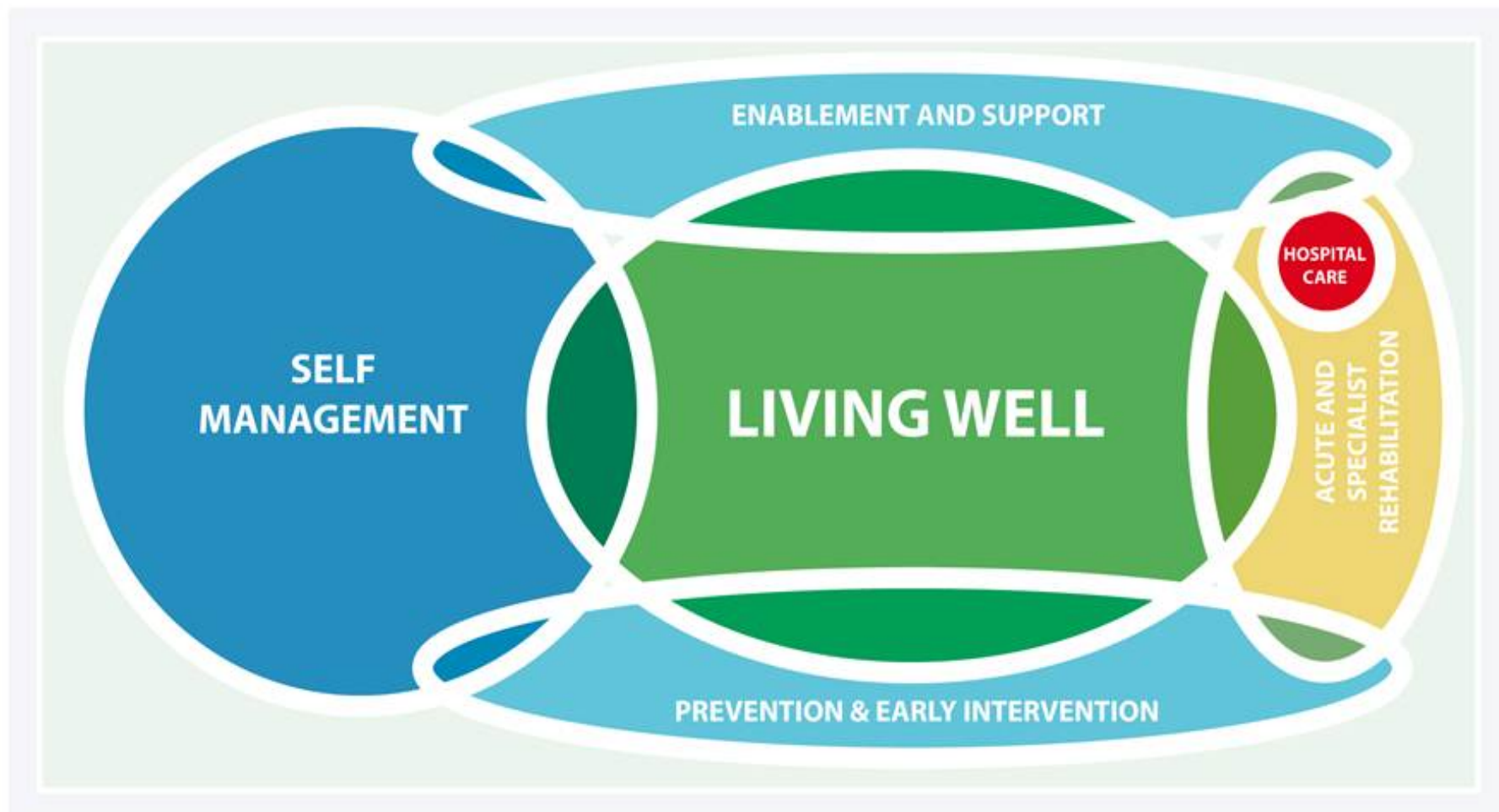
- Sustainable clinical practice
- Partnerships with local government
- Partnerships with industry
- Innovation and solution focussed
- Holding ourselves to account





NHS England and NHS Improvement





NHS England and NHS Improvement



# Thank you!

[sonia.roschnik@nhs.net](mailto:sonia.roschnik@nhs.net)

[www.sduhealth.org.uk](http://www.sduhealth.org.uk)

NHS England and NHS Improvement

