



GLOBAL
GREEN and
HEALTHY
HOSPITALS

WWW.GREENHOSPITALS.NET

a project of
WWW.NOHARM.ORG



Sonia Roschnik
Former Deputy Director, SDU



Highlands and Islands Enterprise
Iomairt na Gàidhealtachd 's nan Eilean



**Sustainable
Healthcare
Coalition**

A carbon story

Sonia Roschnik. June 2017

Sustainable Development Goals



ENVIRONMENTAL IMPACTS ON HEALTH

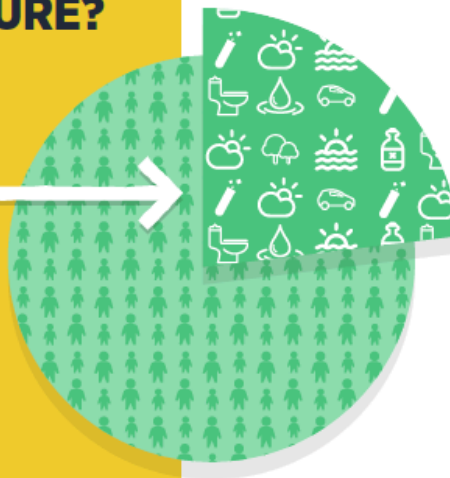
WHAT IS THE BIG PICTURE?

FACT:

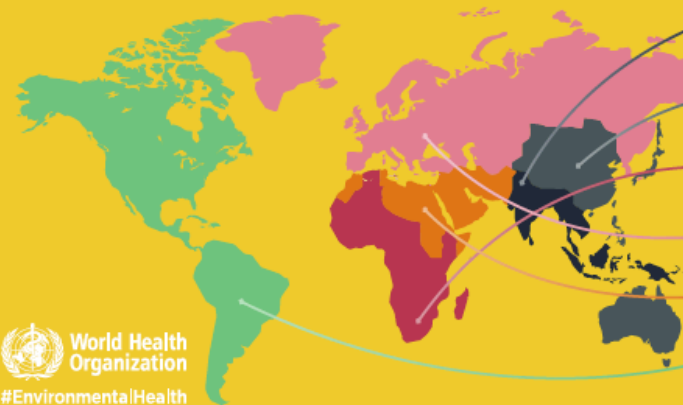
23%

of all global deaths are linked to the environment.

That's roughly **12.6 million deaths** a year.



WHERE IS IT HAPPENING?



3.8 million
in South-East Asia Region

3.5 million
in Western Pacific Region

2.2 million
in Africa Region

1.4 million
in European Region

854 000
in Eastern Mediterranean Region

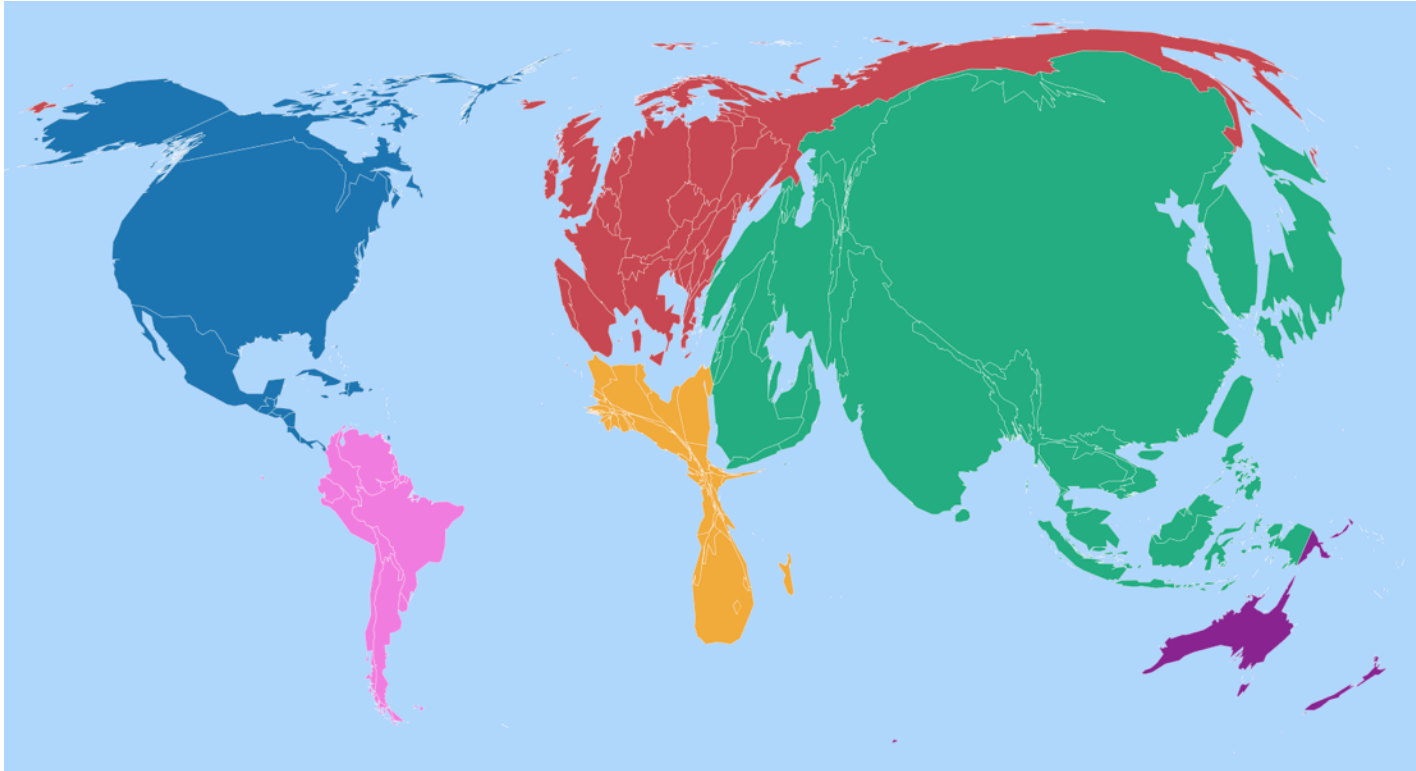
847 000
in the Region of the Americas



World Health
Organization

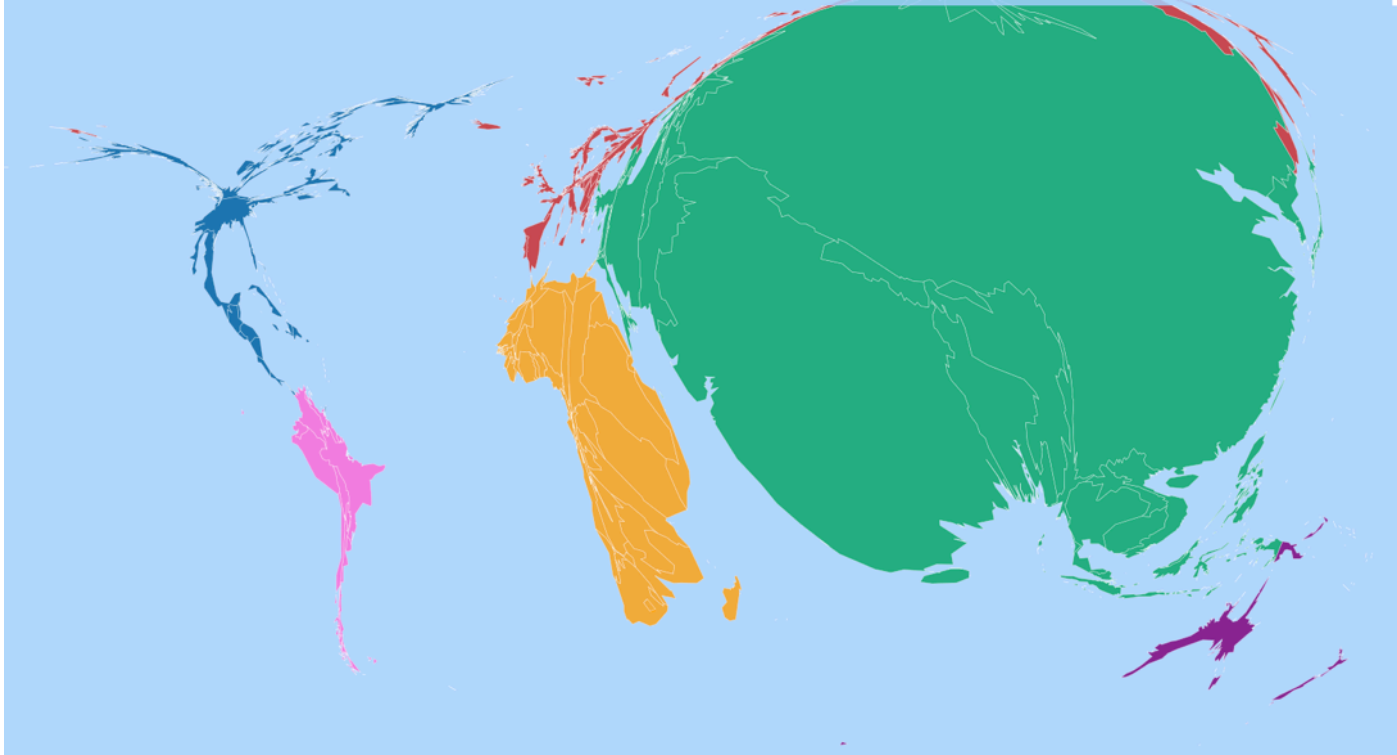
#EnvironmentalHealth

World Map of Carbon Emissions



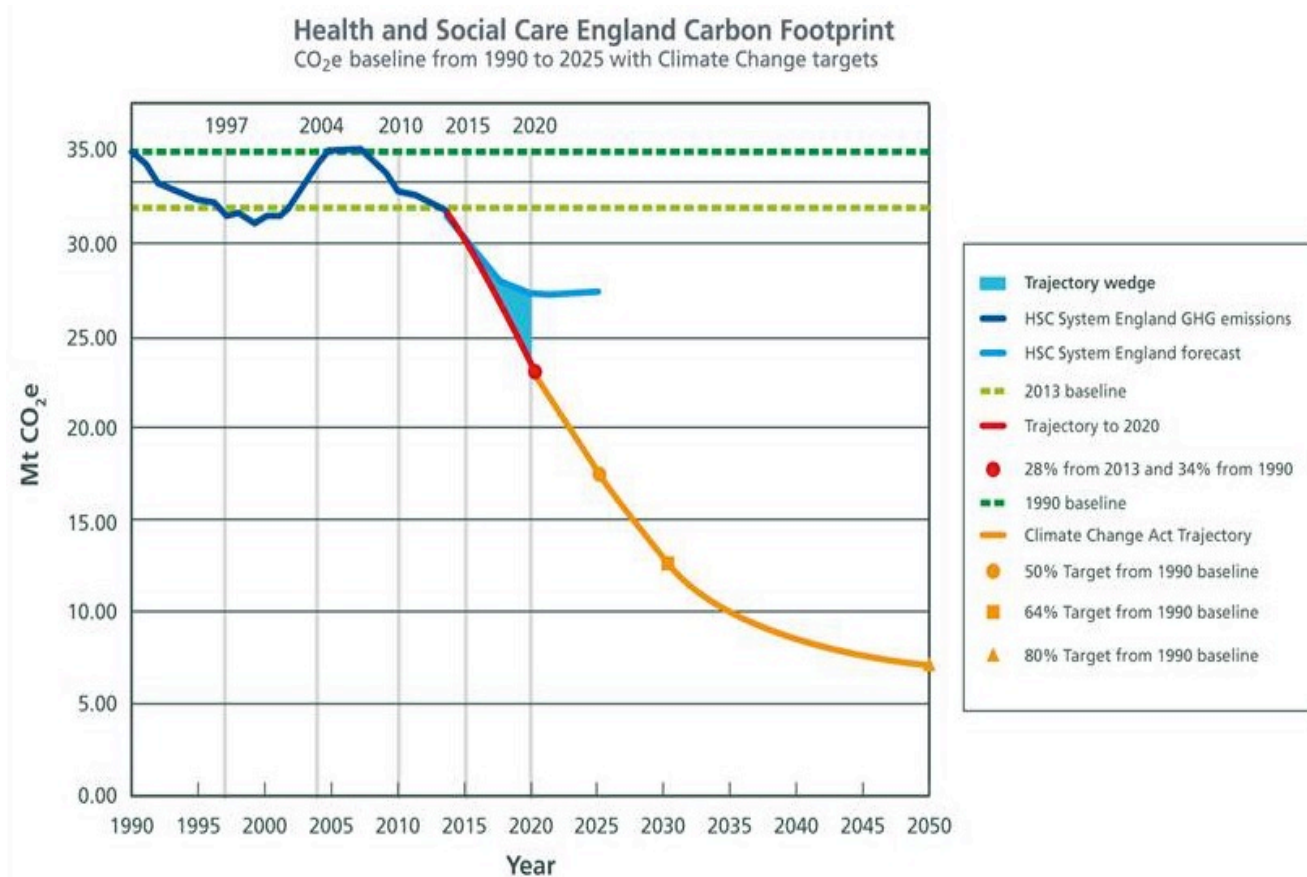
Source: www.carbonmap.org

World Map of Climate Vulnerabilities



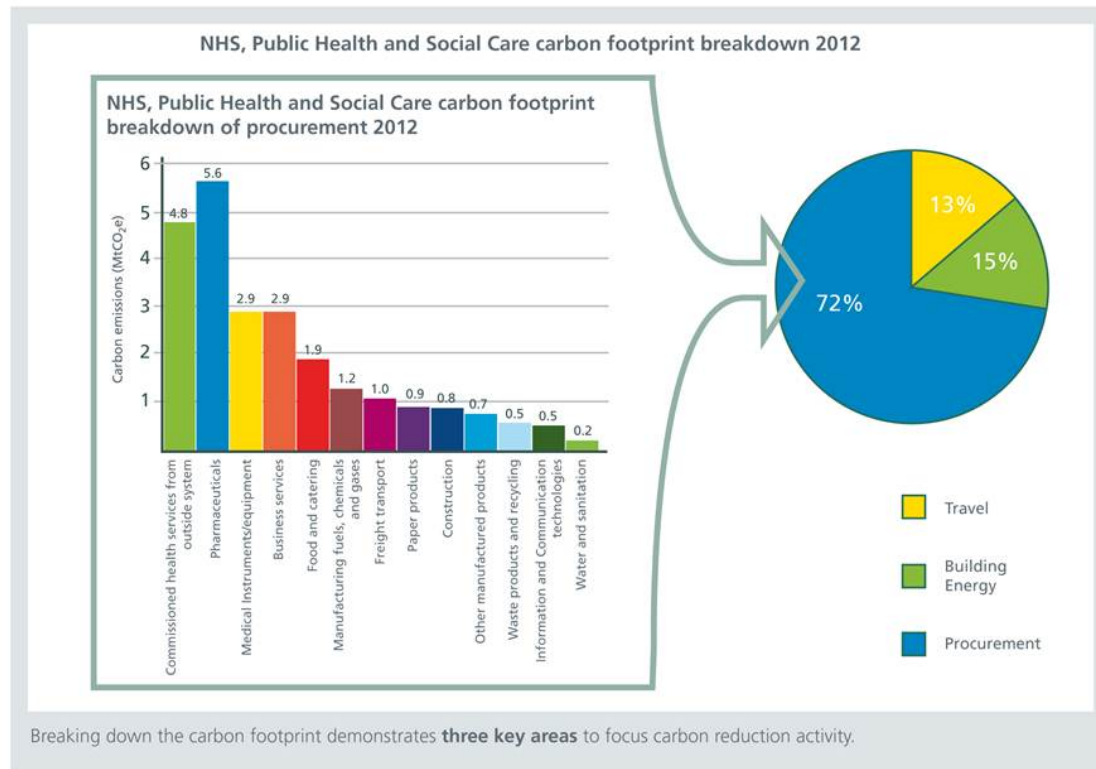
Source: www.carbonmap.org

The role of healthcare



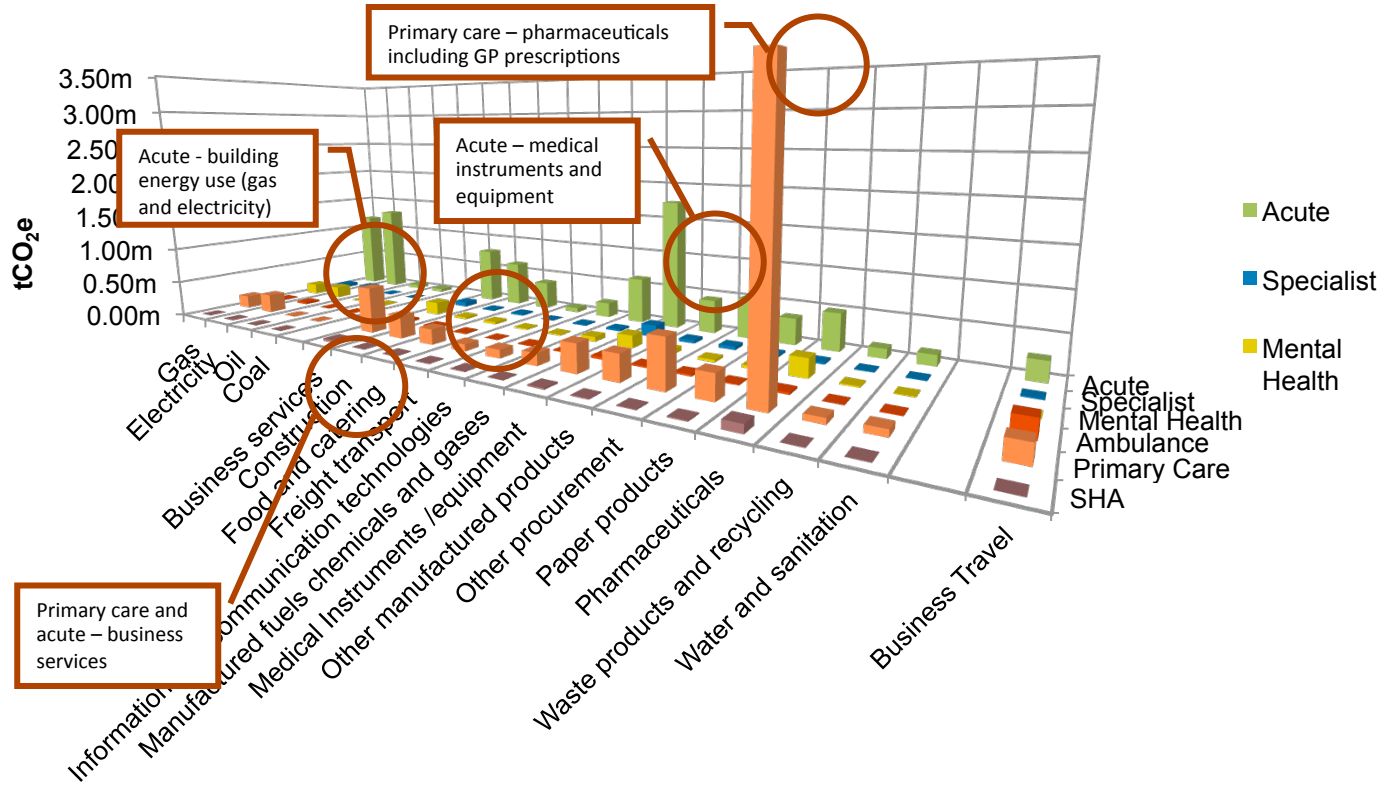
Source: SDU

The role of healthcare



Source: SDU

Goods and Services carbon footprint – carbon hotspots



Examples of good practice: guidance and substitution



Joint Statement for the UN Climate Summit
 COALITION FOR SUSTAINABLE PHARMACEUTICALS AND MEDICAL DEVICES

ERM **NHS Sustainable Development Unit**

Greenhouse Gas Accounting Sector Guidance for Pharmaceutical Products and Medical Devices

GHG Protocol Product Life Cycle Accounting and Reporting Standard

November 2012

BUILT ON GHG PROTOCOL

Care Pathways: Guidance on Appraising Sustainability Summary

October 2015

NHS England **Public Health England** **Sustainable Development Unit**
 Working across the NHS, Public Health and Social Care system

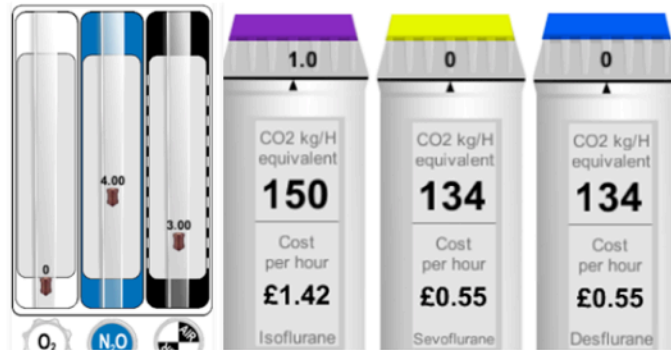
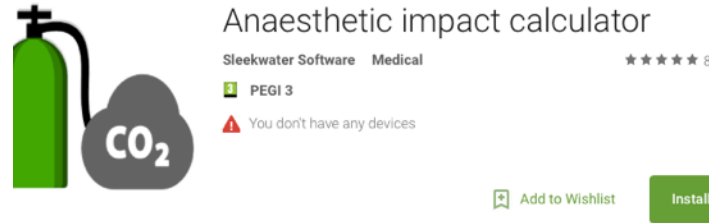
AstraZeneca **Boehringer Ingelheim** **Baxter** **BD** **gsk** **Johnson & Johnson** **Medtronic** **novo nordisk** **ERM**



Examples of good practice: anesthetic choices

- Anesthetist Doctor in England developed a calculator app to support more environmentally conscious choices

Source: Dr Tom Pierce



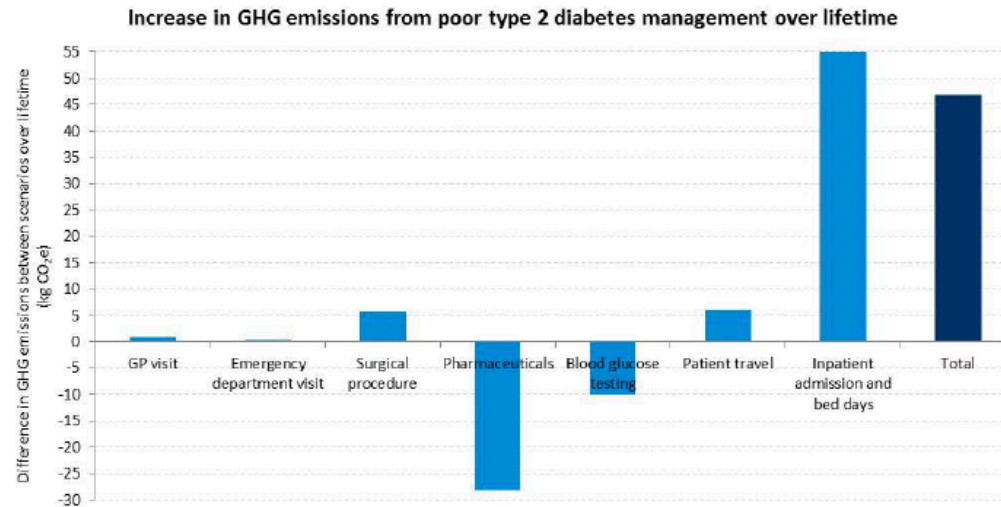
Work out the impact in carbon emissions and cost of your chosen inhaled general anaesthetic agent and flow rate.

The CO2e is expressed as kg CO2 per hour of anaesthesia.

Use this app to decide what's the best choice for not just your patient but also your budget and the environment.

An example

- Well managed conditions such as diabetes or most chronic diseases:
- Improves individual health – living well
- Saves resources for all including carbon



Source: SHC

Examples of good practice: global procurement

- Moving US \$5 billion in health procurement towards
- Low carbon
- Safer chemicals
- Sustainable Resource Use



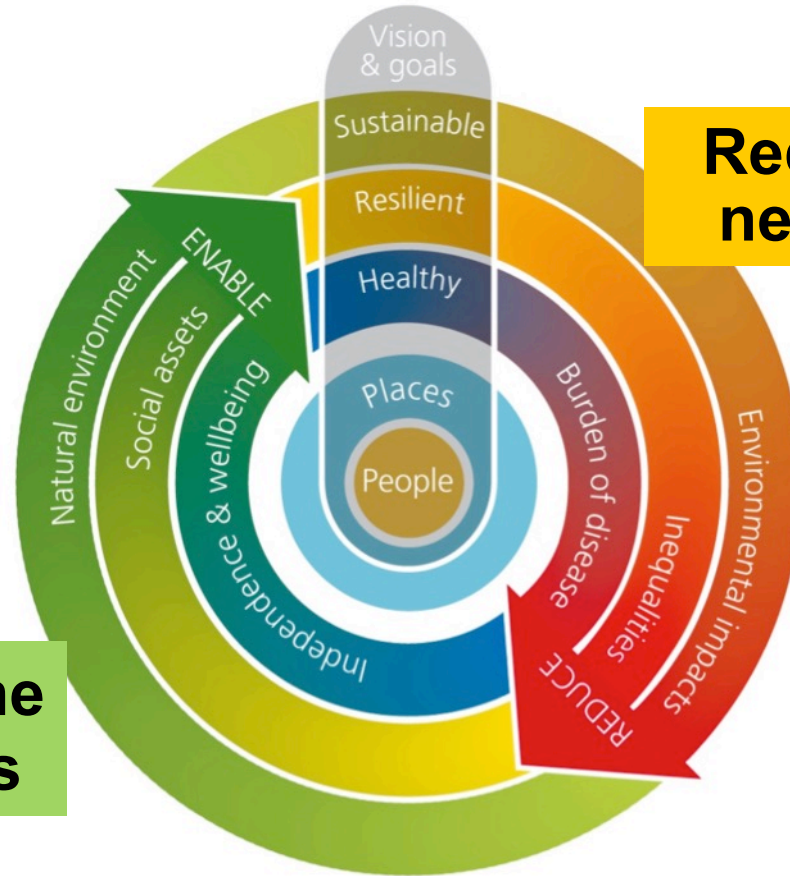
To be the change we want to see, we can all start acting in our own sphere of influence

- As individuals in the choices we make
- As workers, caring about the products that are used
- As industrials, caring about our reach and net positive contribution
- As creators of health for remembering that wellbeing must be nurtured
- As clinicians, caring for the environment and our patients

Sustainable Health

Sustainable,
Resilient,
Healthy,
Places
and
People

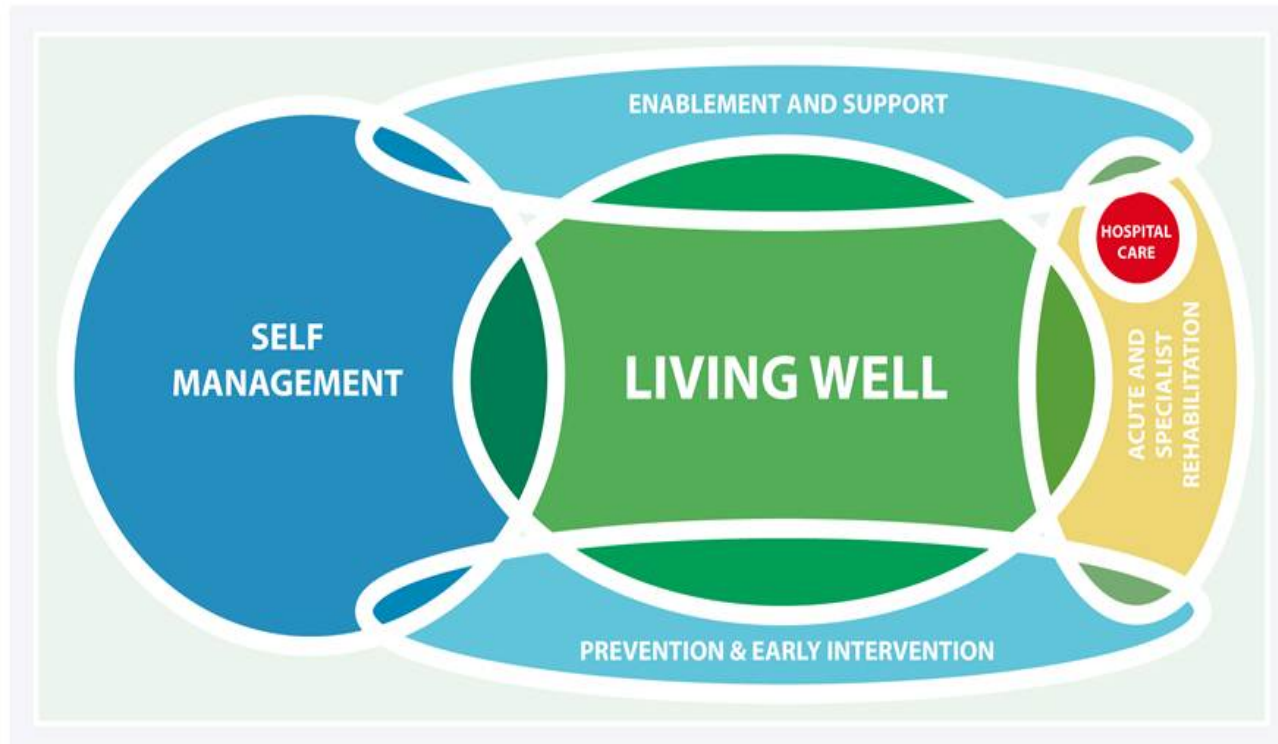
**Enable the
positives**



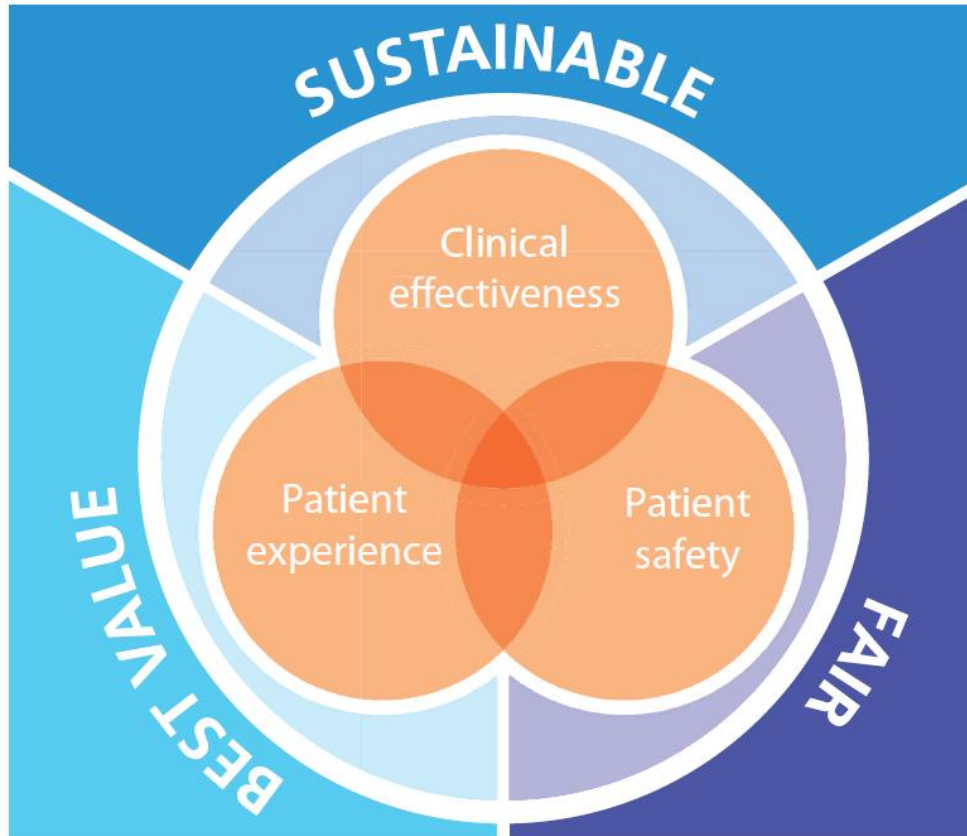
**Reduce the
negatives**

Source: Sustainable Development Unit (2014)

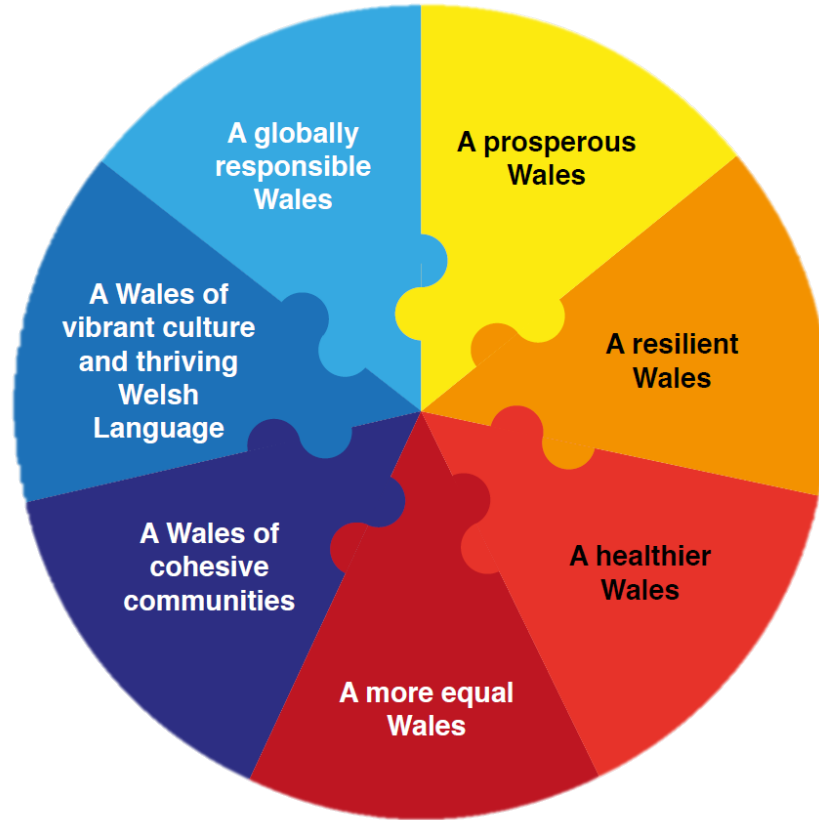
Sustainable models of care



Source: SDU



Well-being goals



Source: Welsh Government