



Rijksinstituut voor Volksgezondheid
en Milieu
*Ministerie van Volksgezondheid,
Welzijn en Sport*

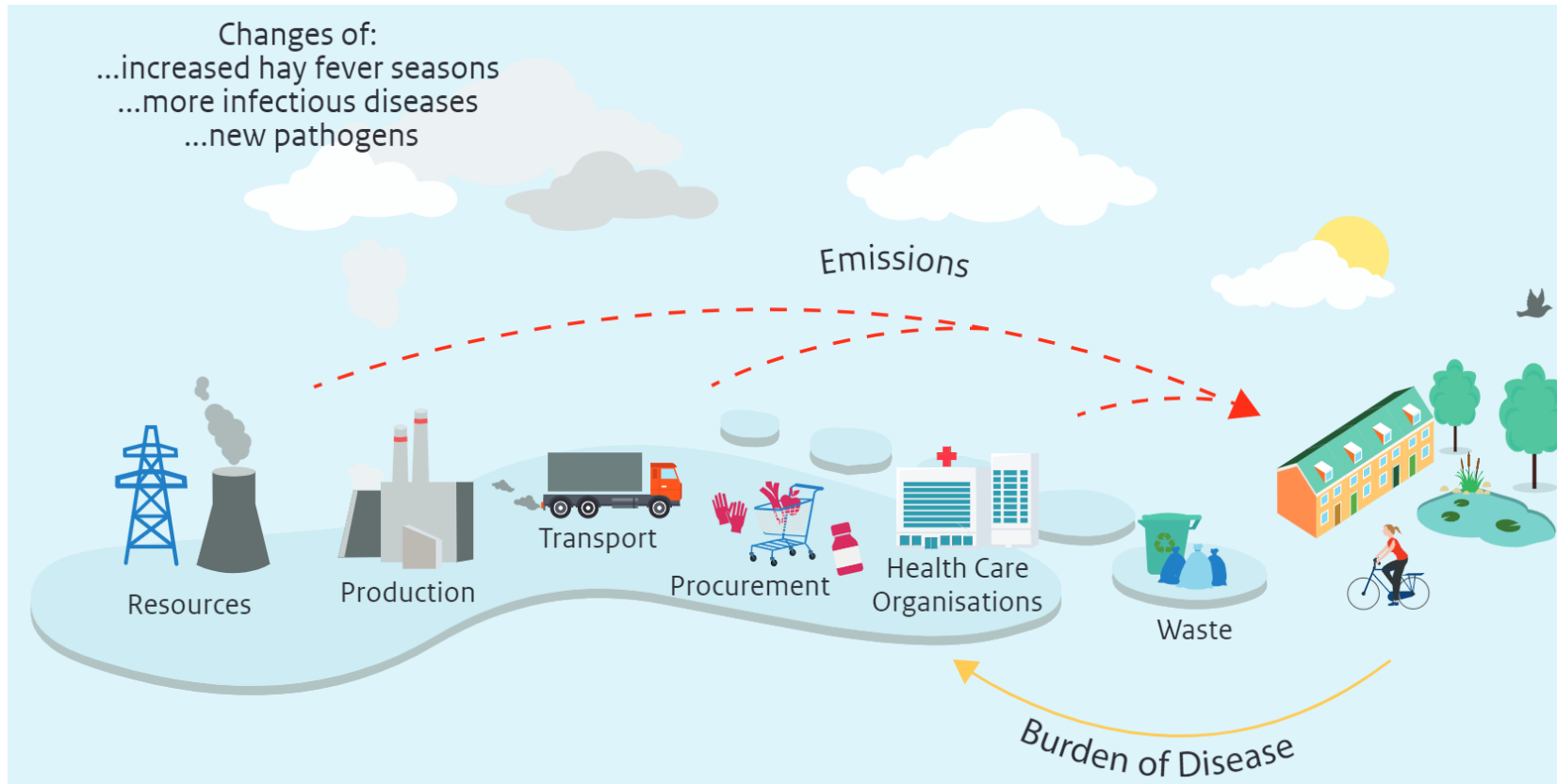
RIVM & Operation Zero

Michelle Steenmeijer

1st September 2022



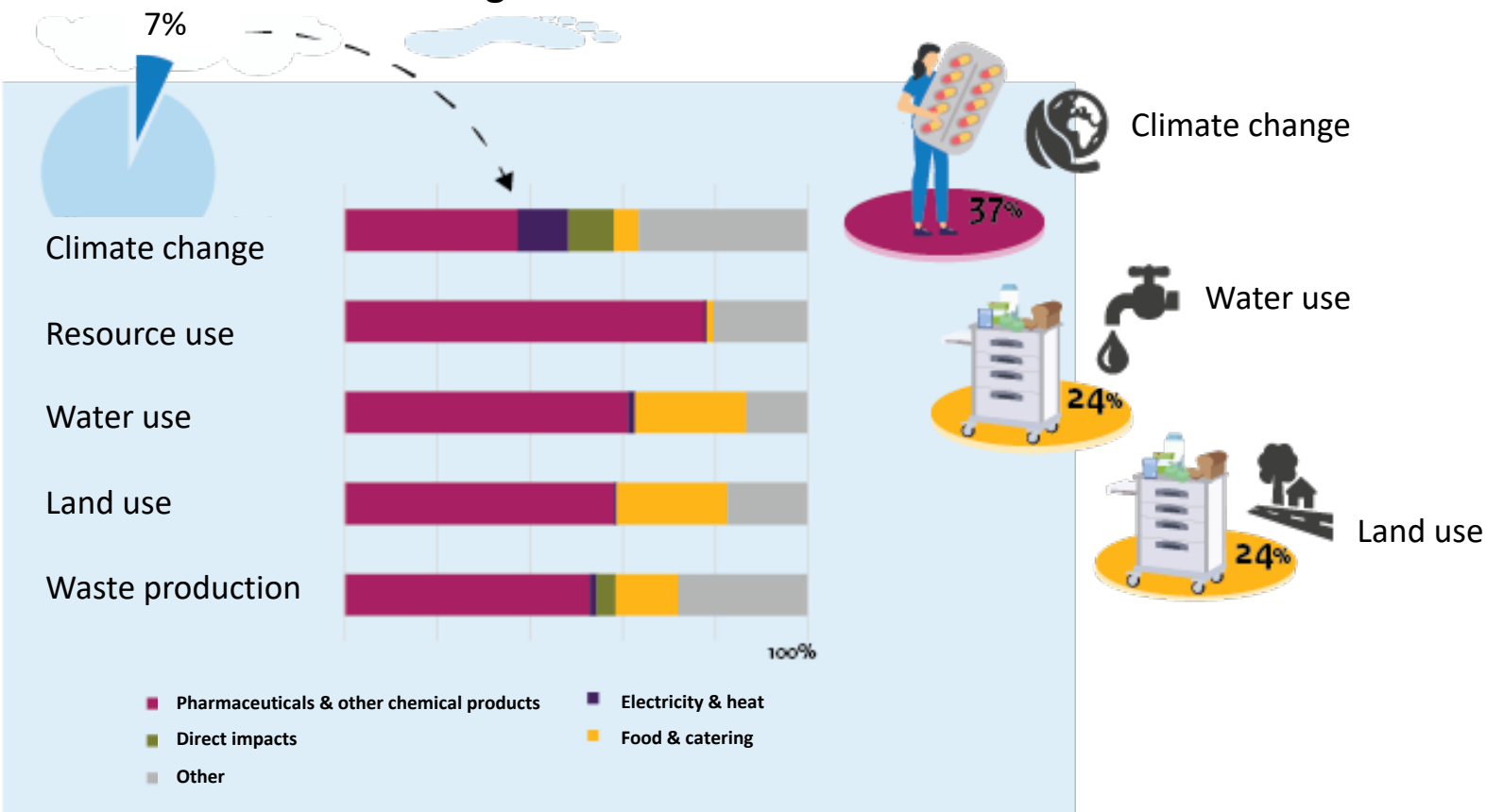
Context





Baseline footprint

..more than climate change





Value of footprint analysis

- 1. Prioritisation tool**
For healthcare professionals & policy makers
- 2. Addressing data gaps**
What areas to investigate more
- 3. Harmonisation**
Common goals & definitions, organises bottom-up analysis



Challenges

- 1. High aggregation**
Disaggregate further for more action
- 2. Hybridisation**
Protocol needed for merging top-down and bottom-up data
- 3. Dealing with uncertainties**
No 'perfect' model yet




Current & future work

1. Environmental footprint Dutch Healthcare (preprint & RIVM report)
2. Environmental impacts pMDI (article)
3. Environmental footprint pharmaceuticals: meta review and predictive models (RIVM report)
4. Scenario modelling (factsheet, to develop)
5. ... many more related projects.



RIVM Sustainable Care

We  knowledge & sharing.
Contact us!

duurzamezorg@rivm.nl

michelle.steenmeijer@rivm.nl

rivm.nl/greendealduurzamezorg