



GLOBAL GREEN and HEALTHY HOSPITALS

**Join the largest sustainable healthcare
network in the world and accelerate
your progress towards becoming a truly
sustainable organisation.**

Prospectus

What is Global Green and Healthy Hospitals?

Global Green and Healthy Hospitals (GGHH) is a worldwide community of more than 2,000 members in 86 countries, representing the interests of over 70,000 hospitals and health centres. In Europe, the GGHH network consists of over 200 members located in 29 WHO Europe region countries.

GGHH is the largest sustainable healthcare network in the world, focused on the interests and needs of healthcare sustainability practitioners. Our members are using innovation, ingenuity, and investment to transform the healthcare sector and create a healthy future for people and the planet. The European GGHH network is coordinated by Health Care Without Harm (HCWH) Europe.



By joining GGHH your organisation will become part of a growing global sustainable healthcare movement, demonstrating your commitment to sustainable development.



Exclusive member benefits

1 Access to GGHH Connect, an innovative, online member platform serving as your gateway to:



**Hippocrates
Data Center**

A unique resource that puts the power of data management, goal benchmarking, and progress tracking into your hands. Hippocrates is the first international platform of its kind designed for the health sector to measure actions towards reducing its environmental footprint.



**GGHH
discussion forum**

Connect with GGHH members around the world - post questions, share resources, or join conversations across 12 topic areas.



**Guidance
documents and
other resources**

Written and reviewed by leading experts from around the world, these resources cover a wide range of sustainable healthcare topics (e.g. sustainable procurement or carbon management). They are a fantastic starting point for helping GGHH members to reduce their environmental footprint.



Case studies

Search over 150 case studies from GGHH members around the world. Learn how projects were designed and implemented, challenges faced and lessons learned, and be inspired to implement your own initiatives.



Webinars

Browse our collection of recorded webinars to learn about the latest sustainable healthcare trends, case studies, and projects, delivered by experts and GGHH members around the globe.

2 Access to the GGHH Europe mailing list and member-only newsletter

Be the first to learn about the latest sustainable healthcare news and opportunities, including upcoming events, webinars, conferences, funding and project opportunities, and news from other GGHH members around Europe.

3 Quarterly GGHH Europe member meetings

Join other GGHH members from the region to learn about a specific sustainable healthcare topic, hear from experts, and connect with other leaders in sustainable healthcare.



4 Have your say in how HCWH Europe is run

As a member-led organisation, GGHH members in Europe can apply to become Executive Members and have a say in the HCWH Europe's governance. Only Executive Members have the right to vote at the HCWH Europe Annual General Meeting (AGM) held each Spring.

5 Participate in pilot projects

Members are often invited to participate in sustainable healthcare pilot projects, receiving hands-on support from experts around specific issues.





Eligibility and requirements

Membership is based on an organisational commitment to HCWH's mission and goals and a desire to participate fully in helping to achieve them.

Membership is open to any organisation that delivers healthcare and social care services in Europe:

- Hospitals, health centres, and other healthcare facilities
- Health systems
- Government/regional health service providers

Joining GGHH is completely free and there are no membership or other fees required.

If your organisation does not fall into one of these categories, or you are unsure, please contact us at europenetwork@hcwh.org.

Become a climate leader

Commit to effective climate action while building collective impact across countries and across borders by joining HCWH Europe initiatives such as the [Race to Zero](#) campaign, or the [Coolfood Pledge](#).

1 Race to Zero

HCWH is honoured to be the [Race to Zero](#) healthcare partner. This United Nations-backed global campaign rallies non-state actors – including companies, cities, regions, financial and educational institutions – to take rigorous and immediate action to halve global emissions by 2030.

All members are committed to the same overarching goal: reducing emissions across all scopes swiftly and fairly in line with the Paris Agreement, with transparent action plans and robust near-term targets.

Find out more:



Join over 60 healthcare institutions, representing the interests of more than 14,000 hospitals and health centres in 26 countries so far!

By joining Race to Zero, healthcare institutions receive a membership in the Health Care Climate Challenge and Global Green and Healthy Hospitals (if your institution is not already a member).

2 Coolfood Pledge

A quarter of all GHG emissions come from food production. By simply changing what we eat, we can make a difference to our climate.

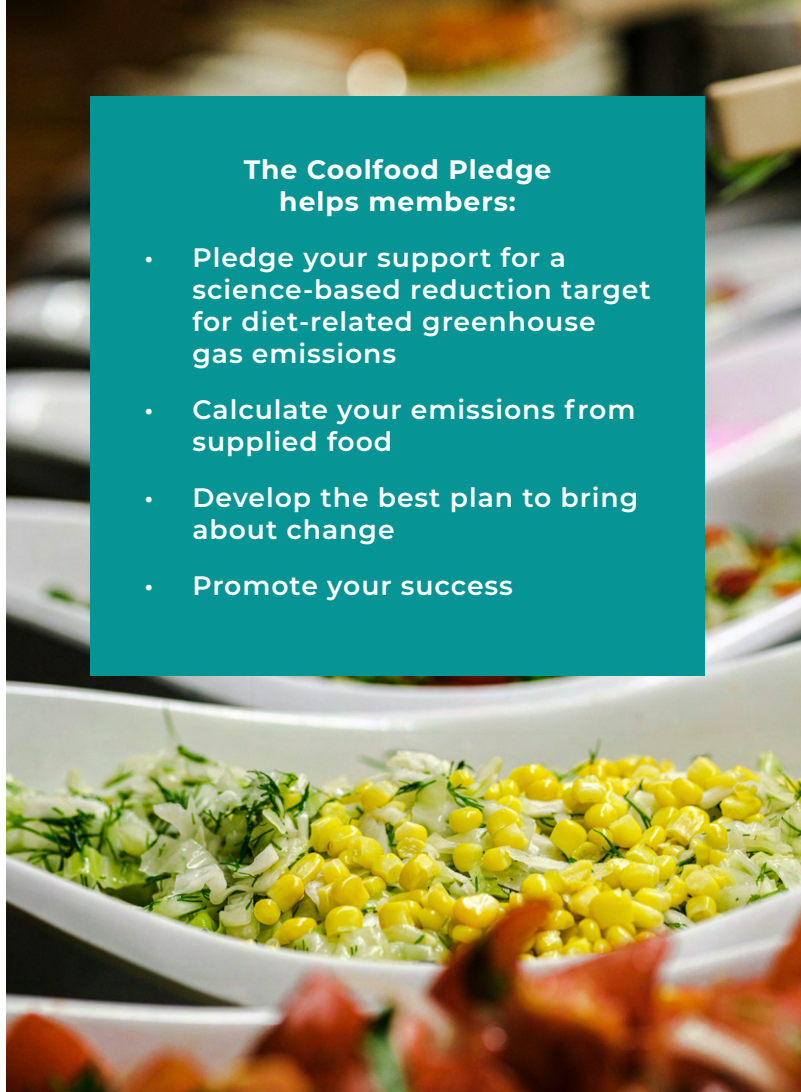
HCWH Europe has partnered with the World Resources Institute (WRI) to bring their [Coolfood Pledge](#) to healthcare facilities across Europe. This collaboration aims to promote plant-centred food in healthcare to protect both patients and the planet.

Find out more:



The Coolfood Pledge helps members:

- Pledge your support for a science-based reduction target for diet-related greenhouse gas emissions
- Calculate your emissions from supplied food
- Develop the best plan to bring about change
- Promote your success



Join our healthcare professional (HCP) action networks

Strengthen your involvement and engage with more opportunities by identifying sustainability champions within your organisation to join our HCP networks:

Doctors for Greener Healthcare

Bringing [doctors](#) from across Europe together to collaborate, share best practice, and advocate for a healthy future by reducing the environmental impact of healthcare.



Nurses Climate Challenge Europe

Mobilising [nurses](#) across Europe to educate themselves and other health professionals on the health impacts of climate change.



Pharmacists for Greener Healthcare

Facilitating the collaboration of [pharmacists](#) from across Europe to tackle pharmaceutical pollution and its contribution to antimicrobial resistance.



**JOIN
TODAY!**



In just a few simple steps, you can join the largest sustainable healthcare network in the world and accelerate your progress towards becoming a truly sustainable organisation.

1 Fill out the [online application form](#)

This will provide us with some background information about your organisation. Please note that completing the form does not automatically commit your organisation to membership.

2 Introductory call

Once you have completed the online application form, we will reach out to arrange an introductory call, during which we will tell you more about membership and its benefits.

3 Send letter of intent to join

We ask potential members to send us a letter of intent to join the network. We will provide you with a template that you can use on your organisation's headed paper, sign, and return it.

4 Board approval

The HCWH Europe Board reviews all applications on a monthly basis.

5 Welcome to the network!

Once approved by our board, we will send you an official welcome letter and a welcome pack that outlines the terms of membership and provides useful links to get you started.

6 Onboarding

We will add your primary and secondary contacts to the membership mailing list and monthly newsletter and introduce your organisation to existing members (via the monthly newsletter). We will also add your organisation's name to the member list on our website and create accounts for you and your team on GGHH Connect, providing you with support to start navigating the membership platform.

7 Start enjoying the benefits, tools, and resources that HCWH has to offer!

Executive membership

Executive members are members who have demonstrated the capacity and desire for a greater level of strategic involvement with HCWH Europe's governance and development. Most significantly, only Executive members have the right to vote at the HCWH Europe Annual General Meeting (AGM) held each Spring.

How to become an Executive member

Any existing GGHH organisation wishing to become an Executive member simply needs to send an expression of interest to europenetwork@hcwh.org for consideration from the HCWH Europe Board of Directors.

Selection is based on the current level of member engagement, language and geographical location, and existing sustainability initiatives. This selection process aims to create the most diverse, and experienced group possible group, one that broadly represents the needs and challenges of all members.





Executive membership

Expectations of Executive members

As industry leaders in healthcare sustainability, there is an expectation that Executive members will be more engaged with our work, participating where possible in the below activities:

- Exercise the right to vote at HCWH Europe General Meetings (mandatory requirement).
- Participate in workshops and other activities to support the HCWH Europe team and Board of Directors in developing our organisational strategy.
- Participate as expert speakers for HCWH Europe events to inspire and motivate newer members of the GGHH network.
- Become an ambassador for HCWH Europe's work, and sustainable healthcare in general, within Europe and around the world.



**If you have any questions about membership
or would like more information, please contact
europenetwork@hcwh.org.**



**Co-funded by
the European Union**

Co-funded by the European Union. Views and opinions expressed are however those of the author(s) only and do not necessarily reflect those of the European Union or the European Health and Digital Executive Agency (HaDEA). Neither the European Union nor the granting authority can be held responsible for them.