

SAFEGUARDING OUR ENVIRONMENT: YOUR ROLE IN REDUCING PHARMACEUTICAL POLLUTION FROM HOME



Medications are **essential** for treating illnesses and improving quality of life, but **improper disposal** can harm the environment and human health

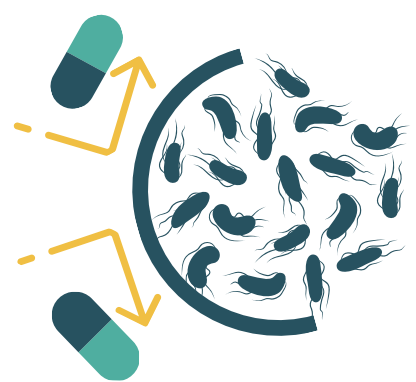
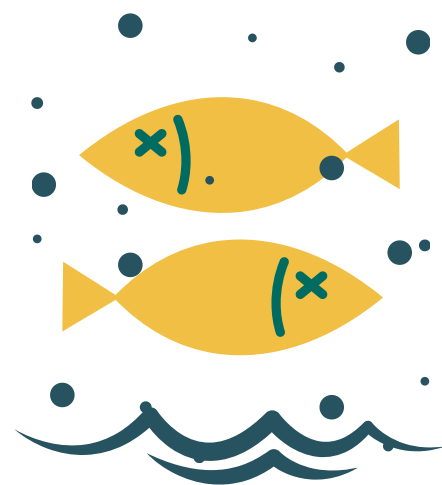
HOW PHARMACEUTICAL POLLUTION HAPPENS

Active pharmaceutical ingredients remain active long after disposal



If not disposed of correctly, they end up in our water systems

Pharmaceuticals are designed to interact with living organisms and they can disrupt local ecosystems, even in low doses



This contributes to the acceleration of antibiotic resistance, making infections harder to treat

YOU CAN REDUCE YOUR PHARMACEUTICAL FOOTPRINT



Never flush medications down the toilet

Pharmaceuticals can bypass treatment in wastewater and enter natural water bodies



Always follow medical advice

Take medications as prescribed by your doctor



Don't throw medications in the rubbish

Check the leaflets and follow local guidelines for returning unused medications



Use drug give-back programmes

We are here to help: when in doubt, consult your local pharmacist

