



**Sustainable  
Healthcare  
Coalition**

# **PARTNERSHIPS FOR CLIMATE-SMART HEALTHCARE**

**Dr Fiona Adshead**

---

**European Healthcare Climate Summit | London |  
11<sup>th</sup> September 2019**

# Who we are

We are a partnership of healthcare companies and other health agencies drawn together to address some of the most pressing sustainability issues in global healthcare.

Our purpose is to facilitate the journey towards good health and wellbeing on a finite planet, through open-minded collaboration across public and private healthcare.

Our core group draws in participation from other health system players including trade bodies, state healthcare providers, public health institutions and international agencies.



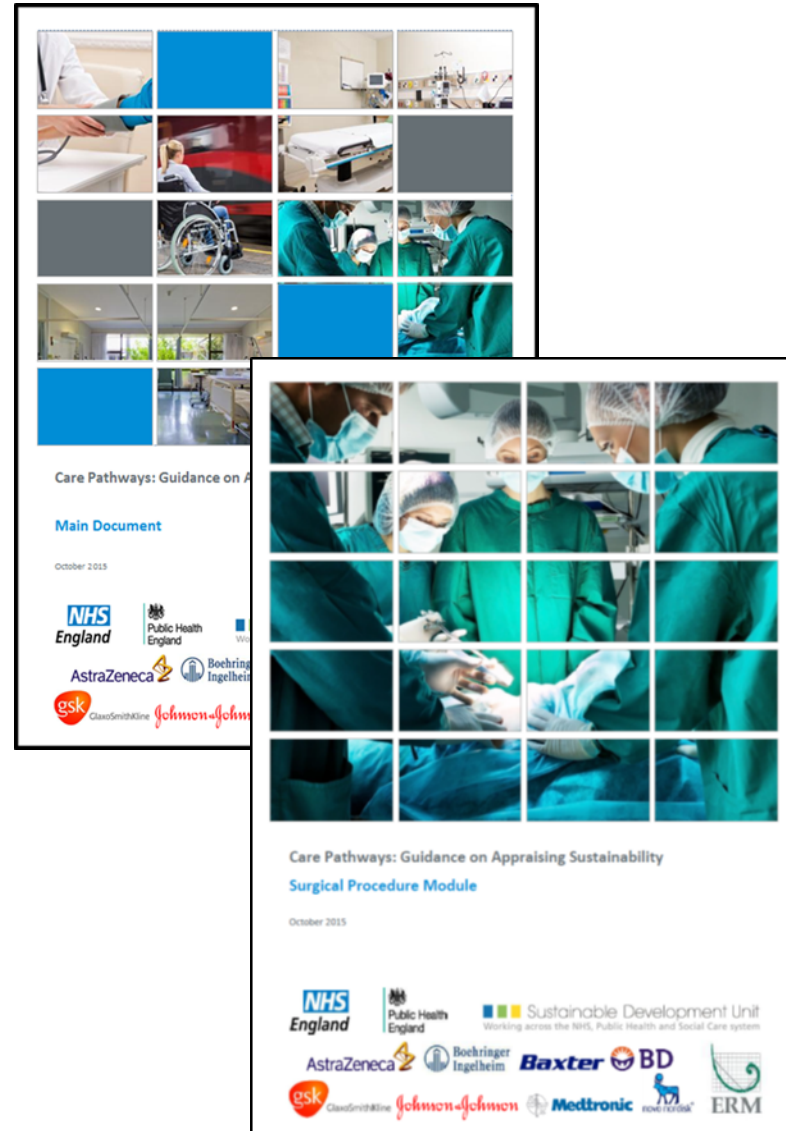
# The beginning

- The group first came together at the invitation of the NHS Sustainable Development Unit in response to evidence that pharmaceutical products were responsible for much of the NHS's carbon footprint.
- By sharing data and expertise, the group was able to create world-first guidance on how to measure the carbon footprint of pharmaceuticals and medical devices.



# Care pathways

- Encouraged by the value of the collaboration, the group chose to continue their work.
- Inviting wider collaboration, the partnership went on to produce guidance on understanding the environmental impacts of whole care pathways.



## CARE PATHWAYS MODULES

- GP consultation
- Patient travel
- Emergency Department visit
- Inpatient bed day
- Surgical procedure
- Self-management

# Case studies

## Digital adherence monitoring in poorly controlled paediatric asthma

This study demonstrates that good asthma treatments, effectively delivered and adhered to, result in reduced environmental impacts. The most impactful effect on the environment from children controlling asthma with a Smartinhaler™ device is through reduced reliever use and reduced hospital admissions.



A reduction of overall greenhouse gas (GHG) emissions by around 50% is achieved, from improved adherence when using a DPI Smartinhaler™ device compared with a patient with poorly controlled asthma. Waste production and water consumption were estimated to be similarly reduced by Smartinhaler™ device use, by around 60% and 32% respectively.

## Case studies

### Environmental impact of the CWP 800 Water Purification System



**Baxter**

The key hotspots in the life cycle of the CWP 800 water purification system are associated with energy and water consumption in the use Phase. Based on these results, Baxter is involved in the following actions:

The CWP 800 water purification system has been designed to optimize energy and water usage during operation through design features that allow water saving functions in all modes of operation, including recycling of reject water and disinfection without chemicals.

Efficiency and carbon reduction are ultimately influenced by the correct sizing and installation, and Baxter's service team work with renal units prior to installation to ensure that the correct system is specified for the number of beds in the unit and that pipework is reduced.

# Case studies

## Environmental Impact and Benefits of Care4Today® TKR Care Pathway

Using research by Nottingham University Hospital (NUH), this assessment demonstrates that there are substantial improvements for the environment when Care4Today®, a digital care pathway program, is used with Total Knee Replacement (TKR) procedures.

Care4Today® integrates health and multi media features with clinical Enhanced Recovery After Surgery protocols and technology. In this study, the data showed that Care4Today® improved outcomes and delivered substantial reductions in LoS (length of stay), thus leading to substantial reductions in cost at both the patient and environmental levels. GHG savings are estimated to be 50 kg CO<sub>2</sub>e per patient.



**care4today®**

**Johnson & Johnson**

# Next steps

Alongside developing further the applicability of its greenhouse gas and care pathways work, the Sustainable Healthcare Coalition is now expanding its thinking and activity in areas such as:

- how circular economy principles can be applied to 'circular healthcare'
- how sustainability benefits can be brought to bear through consideration of how supply chain and procurement processes operate for effective and efficient healthcare systems.



2014

NHS  
England

AstraZeneca

Johnson & Johnson

gsk

Baxter

novo nordisk

COVIDIEN™

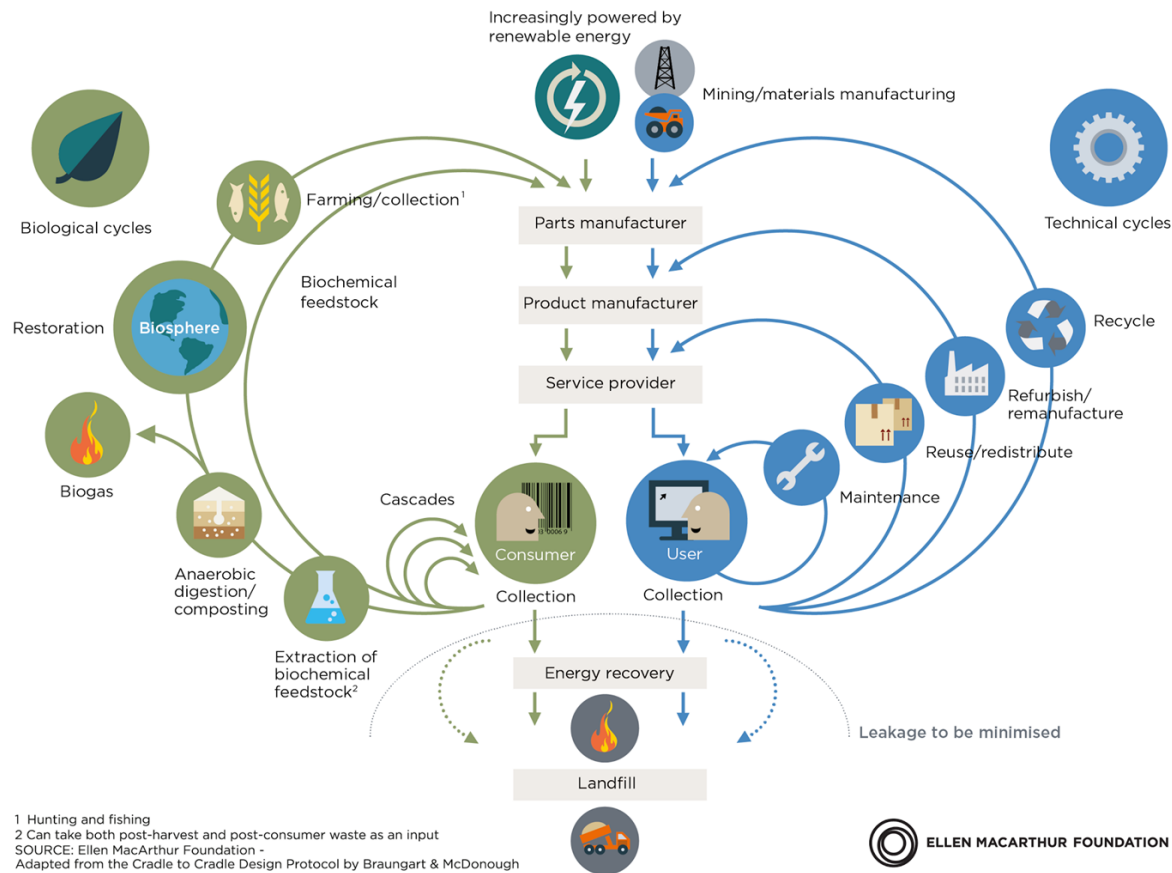
**Joint Statement for the UN  
Climate Summit**  
COALITION FOR SUSTAINABLE PHARMACEUTICALS  
AND MEDICAL DEVICES





# Circular solutions for healthcare

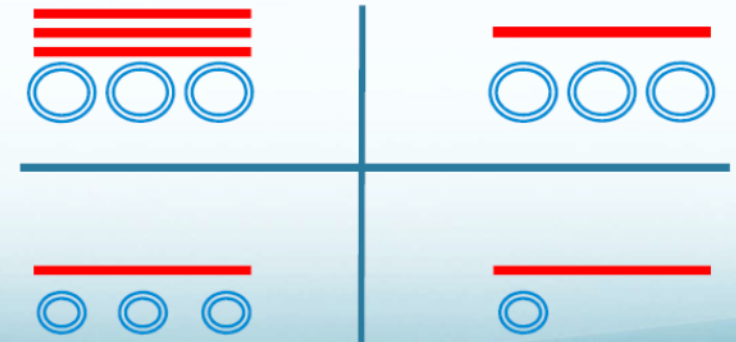
CIRCULAR ECONOMY - an industrial system that is restorative by design



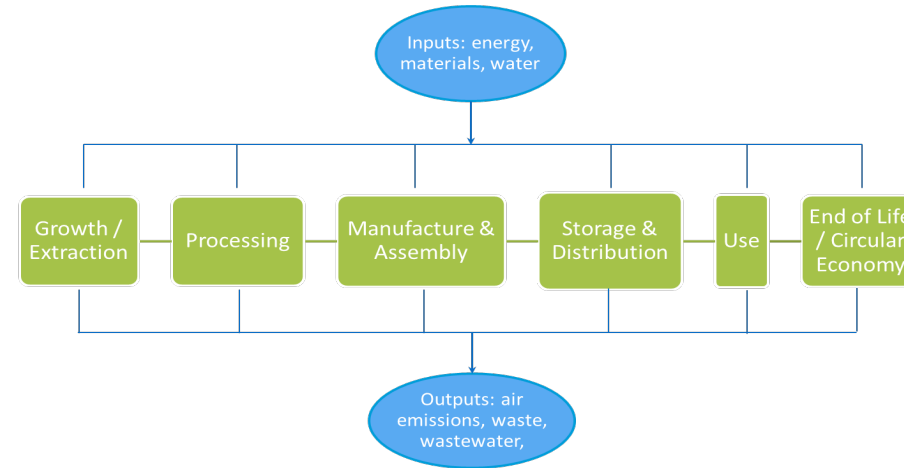
<sup>1</sup> Hunting and fishing  
<sup>2</sup> Can take both post-harvest and post-consumer waste as an input  
 SOURCE: Ellen MacArthur Foundation - Adapted from the Cradle to Cradle Design Protocol by Braungart & McDonough

The sector's goal should be efficiency in delivering its core function – maximising individual lifetime and societal wellbeing at the least possible sustainability cost.

Current mix of linear and loose circular consumptions



# Building supply chain partnerships



Following on from a research report looking at the role of procurement in healthcare sustainability, the Coalition is currently embarking on a collaborative exercise to map key products through manufacture, supply, use and disposal to highlight opportunities and barriers to reducing footprints and closing loops.

# Lessons learnt

- At the beginning of the Coalition, the clear expression of “need” was a powerful driving force to get cross-sectoral actors around the table. That **clarity of signal** is what keeps us collaborating and exploring innovative ideas that wouldn’t be possible if we continue to act in any one “silo”.
- Giving birth to the product carbon footprinting guidance was a significant early win. Designing tools is not enough to ensure that the change you seek is delivered in practice. **Guided implementation** is also needed with ambition to achieve scale.
- Problem ownership and solution ownership are not necessarily held in the same organisation, or even the same sector. Collaboration, though, allows **joint ownership of the agenda for change**. It fosters a more collectivist vision to be generated that transcends organisational and sectoral boundaries and means that more effective responses can be found across the sector.
- Challenge, openness to new ideas and collaboration coupled with innovation as a driving force are needed to meet the leadership challenges ahead.

# Next steps

Alongside developing further the applicability of its greenhouse gas and care pathways work, the Sustainable Healthcare Coalition is now expanding its thinking and activity in areas such as:

- how circular economy principles can be applied to ‘circular healthcare’.
- how sustainability benefits can be brought to bear through consideration of how supply chain and procurement processes operate for effective and efficient healthcare systems.
- Invitation to work with us on how best to collaborate for mutual value and system impact towards sustainable healthcare

2014



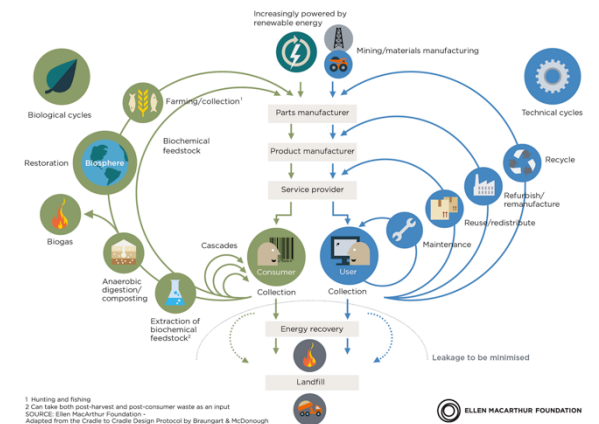

  
  




**Joint Statement for the UN  
Climate Summit**  
COALITION FOR SUSTAINABLE PHARMACEUTICALS  
AND MEDICAL DEVICES



CIRCULAR ECONOMY - an industrial system that is restorative by design



# Say hello...

We are always open to conversations and engagement with like-minded organisations we can collaborate with on common agendas.

Keith Moore, Programme Coordinator  
Keith@shcoalition.org  
+44 (0)7584 162 437

Dr Fiona Adshead, Chair:  
fiona.adshead@btinternet.com

